

## INSL4 (L79) polyclonal antibody

Catalog: BS3118

Host: Rabbit

Reactivity: Human, Mouse, Rat

### BackGround:

Insulin is a secreted peptide hormone that elicits metabolic effects such as increases in glucose uptake and glycogen synthesis leading to a decrease in blood glucose concentration. Insulin is first formed as a precursor molecule, preproinsulin, which is later cleaved to proinsulin and finally to the mature insulin hormone. Insulin-like peptides (INSL proteins), also designated Relaxinlike factors, are members of the insulin family, which regulate cell growth, metabolism and tissue-specific functions. INSL1-7 are mostly secreted proteins that are expressed mainly in testis, placenta, uterus or prenatal tissues. INSL4 is a 139 amino acid secreted protein expressed in the placenta, uterus and in fetal perichondrium. It may play an important role in the regulation of bone formation and in trophoblast development.

### Product:

1 mg/ml in Phosphate buffered saline (PBS) with 0.05% sodium azide, approx. pH 7.2.

### Molecular Weight:

~ 19 kDa

### Swiss-Prot:

Q14641

### Purification&Purity:

The antibody was affinity-purified from rabbit antiserum by affinity-chromatography using epitope-specific immunogen and the purity is > 95% (by SDS-PAGE).

### Applications:

WB: 1:500~1:1000

IHC: 1:50~1:200

IF: 1:50~1:200

### Storage&Stability:

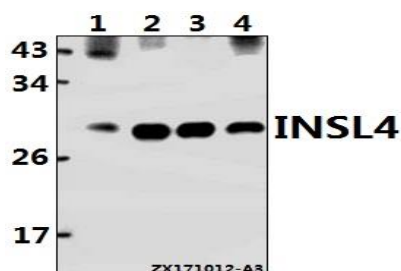
Store at 4 °C short term. Aliquot and store at -20 °C long

term. Avoid freeze-thaw cycles.

### Specificity:

INSL4 (L79) polyclonal antibody detects endogenous levels of INSL4 protein.

### DATA:



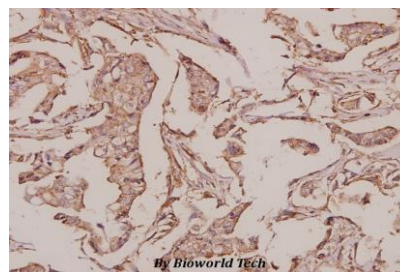
Western blot (WB) analysis of INSL4 (L79) pAb at 1:500 dilution

Lane1:Hela whole cell lysate(40ug)

Lane2:AML-12 whole cell lysate(20ug)

Lane3:H9C2 whole cell lysate(20ug)

Lane4:H1792 whole cell lysate(40ug)



Immunohistochemistry (IHC) analyzes of INSL4 (L79) pAb in paraffin-embedded human breast carcinoma tissue at 1:50.

### Note:

For research use only, not for use in diagnostic procedure.

### Bioworld Technology, Inc.

Add: 1660 South Highway 100, Suite 500 St. Louis Park, MN 55416, USA.

Email: [info@bioworld.com](mailto:info@bioworld.com)

Tel: 6123263284

Fax: 6122933841

### Bioworld technology, co. Ltd.

Add: No 9, weidi road Qixia District Nanjing, 210046, P. R. China.

Email: [info@biogot.com](mailto:info@biogot.com)

Tel: 0086-025-68037686

Fax: 0086-025-68035151