

## ARF4 (E106) polyclonal antibody

Catalog: BS3065

Host: Rabbit

Reactivity: Human, Mouse

### BackGround:

The ADP-ribosylation factor (ARF) protein family are structurally and functionally conserved members of the Ras superfamily of regulatory GTP-binding proteins. ARFs influence vesicle trafficking and signal transduction in eukaryotic cells. ARF-dependent regulatory mechanisms include the coordination of spectrin interactions with Golgi membranes and the association of actin to the Golgi via rho family-dependent G-protein localization (Rac, CDC42) and WASP/Arp2/3 complexes. Additionally, ARFs play a central role in maintenance of organelle integrity, assembly of coat proteins, and activation of phospholipase D. The ARF proteins are categorized as class I (ARF1, ARF2, and ARF3), class II (ARF4 and ARF5) and class III (ARF6); members of each class share a common gene organization. The human ARF1 gene maps to chromosome 1q42, contains 5 exons and 4 introns, and encodes a 181 amino acid protein.

### Product:

1 mg/ml in Phosphate buffered saline (PBS) with 0.05% sodium azide, approx. pH 7.2.

### Molecular Weight:

~ 21 kDa

### Swiss-Prot:

P18085

### Purification&Purity:

The antibody was affinity-purified from rabbit antiserum by affinity-chromatography using epitope-specific immunogen and the purity is > 95% (by SDS-PAGE).

### Applications:

WB: 1:500~1:1000

IHC: 1:50~1:200

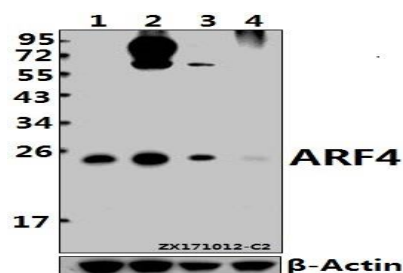
### Storage&Stability:

Store at 4 °C short term. Aliquot and store at -20 °C long term. Avoid freeze-thaw cycles.

### Specificity:

ARF4 (E106) polyclonal antibody detects endogenous levels of ARF4 protein.

### DATA:



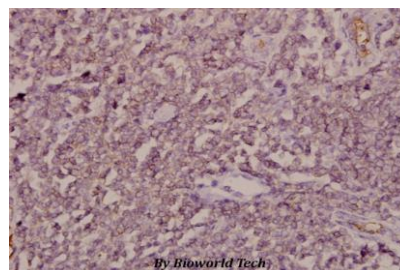
Western blot (WB) analysis of ARF4 (E106) pAb at 1:500 dilution

Lane1:HepG2 whole cell lysate(40ug)

Lane2:K562 whole cell lysate(40ug)

Lane3:L02 whole cell lysate(40ug)

Lane4:3T3-L1 whole cell lysate(40ug)



Immunohistochemistry (IHC) analyzes of ARF4 (E106) pAb in paraffin-embedded human tonsil carcinoma tissue at 1:50.

### Note:

For research use only, not for use in diagnostic procedure.

### Bioworld Technology, Inc.

Add: 1660 South Highway 100, Suite 500 St. Louis Park, MN 55416, USA.

Email: [info@bioworld.com](mailto:info@bioworld.com)

Tel: 6123263284

Fax: 6122933841

### Bioworld technology, co. Ltd.

Add: No 9, weidi road Qixia District Nanjing, 210046, P. R. China.

Email: [info@biogot.com](mailto:info@biogot.com)

Tel: 0086-025-68037686

Fax: 0086-025-68035151