

RPL12 (N103) polyclonal antibody

Catalog: BS3046

Host: Rabbit

Reactivity: Human

BackGround:

Ribosomes, the organelles that catalyze protein synthesis, are composed of a small subunit (40S) and a large subunit (60S) that consist of over 80 distinct ribosomal proteins. Mammalian ribosomal proteins are encoded by multigene families that contain processed pseudogenes and one functional intron-containing gene within their coding regions. Ribosomal Protein L12, also known as RPL12, is a 165 amino acid protein that localizes to the cytoplasm and exists as a component of the 60S subunit through which it binds directly to 26S rRNA. Multiple isoforms of Ribosomal Protein L12 exist due to alternative splicing events. Like most ribosomal proteins, Ribosomal Protein L12 exists as multiple processed pseudogenes that are scattered throughout the genome

Product:

1 mg/ml in Phosphate buffered saline (PBS) with 0.05% sodium azide, approx. pH 7.2.

Molecular Weight:

~ 18 kDa

Swiss-Prot:

P30050

Purification&Purity:

The antibody was affinity-purified from rabbit antiserum by affinity-chromatography using epitope-specific immunogen and the purity is > 95% (by SDS-PAGE).

Applications:

WB: 1:500~1:1000

IHC: 1:50~1:200

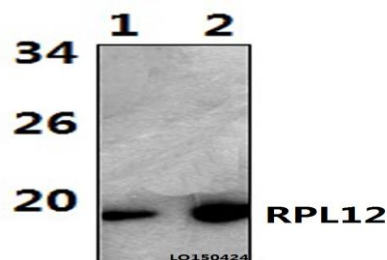
Storage&Stability:

Store at 4 °C short term. Aliquot and store at -20 °C long term. Avoid freeze-thaw cycles.

Specificity:

RPL12 (N103) polyclonal antibody detects endogenous levels of Ribosomal Protein L12 protein.

DATA:



Western blot (WB) analysis of RPL12 (N103) polyclonal antibody at 1:1000 dilution Lane1:HELA whole cell lysate(42ug)

Lane2:HEK293T whole cell lysate(56ug)

Immunohistochemistry (IHC) analyzes of RPL12 (N103) pAb in paraffin-embedded human brain tissue.

Note:

For research use only, not for use in diagnostic procedure.

Bioworld Technology, Inc.

Add: 1660 South Highway 100, Suite 500 St. Louis Park, MN 55416, USA.

Email: info@bioworld.com

Tel: 6123263284

Fax: 6122933841

Bioworld technology, co. Ltd.

Add: No 9, weidi road Qixia District Nanjing, 210046, P. R. China.

Email: info@biogot.com

Tel: 0086-025-68037686

Fax: 0086-025-68035151