

## SIP1 (E101) polyclonal antibody

Catalog: BS3009

Host: Rabbit

Reactivity: Human, Mouse

### BackGround:

SIP1, also known as SMADIP1 and ZFH1B, can be induced by TGF $\beta$  treatment. SIP1 plays a crucial role in normal embryonic development of neural structures and the neural crest. The human SIP1 gene maps to chromosome 2q22. Mutations in the SIP1 gene cause a form of Hirschsprung disease (HSCR). Patients with SIP1 mutations show mental retardation, delayed motor development, epilepsy, microcephaly, distinct facial features and/or congenital heart disease—all symptoms of HSCR.

### Product:

1 mg/ml in Phosphate buffered saline (PBS) with 0.05% sodium azide, approx. pH 7.2.

### Molecular Weight:

~ 157 kDa

### Swiss-Prot:

O60315

### Purification&Purity:

The antibody was affinity-purified from rabbit antiserum by affinity-chromatography using epitope-specific immunogen and the purity is > 95% (by SDS-PAGE).

### Applications:

WB: 1:500~1:1000

IHC: 1:50~1:200

### Storage&Stability:

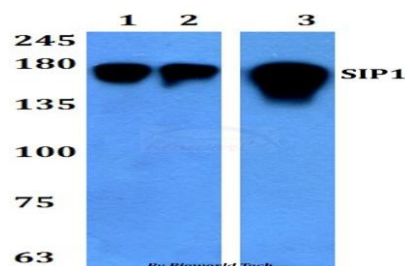
Store at 4 °C short term. Aliquot and store at -20 °C long term. Avoid freeze-thaw cycles.

### Specificity:

SIP1 (E101)pAb detects endogenous levels of SIP1 protein.

tein.

### DATA:

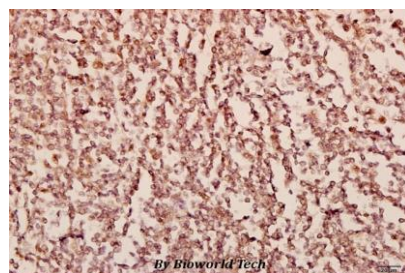


Western blot (WB) analysis of SIP1 (E101) polyclonal antibody at 1:500 dilution

Lane1:Hela whole cell lysate

Lane2:HEK293T whole cell lysate

Lane3:NIH-3T3 whole cell lysate



Immunohistochemistry (IHC) analyzes of SIP1 (E101) pAb in paraffin-embedded human breast carcinoma tissue at 1:50.

### Note:

For research use only, not for use in diagnostic procedure.

### Bioworld Technology, Inc.

Add: 1660 South Highway 100, Suite 500 St. Louis Park, MN 55416, USA.

Email: [info@bioworld.com](mailto:info@bioworld.com)

Tel: 6123263284

Fax: 6122933841

### Bioworld technology, co. Ltd.

Add: No 9, weidi road Qixia District Nanjing, 210046, P. R. China.

Email: [info@biogot.com](mailto:info@biogot.com)

Tel: 0086-025-68037686

Fax: 0086-025-68035151