

Na⁺/K⁺-ATPase α 1 (G19) polyclonal antibody

Catalog: BS3002

Host: Rabbit

Reactivity: Human, Mouse, Rat

BackGround:

The ubiquitously expressed sodium/potassium-ATPase (Na⁺/K⁺-ATPase) exists as a oligomeric plasma membrane complex that couples the hydrolysis of one molecule of ATP to the importation of three Na⁺ ions and two K⁺ ions against their respective electrochemical gradients. As a member of the P-type family of ion motives, Na⁺/K⁺-ATPase plays a critical role in maintaining cellular volume, resting membrane potential and Na⁺-coupled solute transport. Multiple isoforms of three subunits, α , β and γ , comprise to form the Na⁺/K⁺-ATPase oligomer. The α subunit contains the binding sites for ATP and the cations; the glycosylated β subunit ensures correct folding and membrane insertion of the α subunits. The small γ subunit co-localizes with the α subunit in nephron segments, where it increases the affinity of Na⁺/K⁺-ATPase for ATP.

Product:

1 mg/ml in Phosphate buffered saline (PBS) with 0.05% sodium azide, approx. pH 7.2.

Molecular Weight:

~ 113 kDa

Swiss-Prot:

P06685

Purification&Purity:

The antibody was affinity-purified from rabbit antiserum by affinity-chromatography using epitope-specific immunogen and the purity is > 95% (by SDS-PAGE).

Applications:

IHC: 1:50~1:200

IF: 1:50~1:200

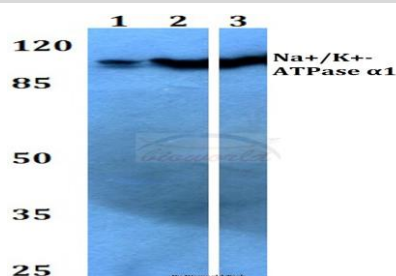
Storage&Stability:

Store at 4 °C short term. Aliquot and store at -20 °C long term. Avoid freeze-thaw cycles.

Specificity:

Na⁺/K⁺-ATPase α 1 (G19) polyclonal antibody detects endogenous levels of Na⁺/K⁺-ATPase α 1 protein.

DATA:



Note:

For research use only, not for use in diagnostic procedure.

Bioworld Technology, Inc.

Add: 1660 South Highway 100, Suite 500 St. Louis Park, MN 55416, USA.

Email: info@bioworld.com

Tel: 6123263284

Fax: 6122933841

Bioworld technology, co. Ltd.

Add: No 9, weidi road Qixia District Nanjing, 210046, P. R. China.

Email: info@biogot.com

Tel: 0086-025-68037686

Fax: 0086-025-68035151