

Sam 68 (Y145) polyclonal antibody

Catalog: BS2952

Host: Rabbit

Reactivity: Human, Mouse, Rat

BackGround:

SAM68 is recruited and tyrosine phosphorylated by several receptor systems, and once it is phosphorylated, it functions as an adapter protein in signal transduction cascades by binding to SH2 and SH3 domain-containing proteins. It represses CBP-dependent transcriptional activation apparently by competing with other nuclear factors for binding to CBP. It also acts as a putative regulator of mRNA stability and/or translation rates and mediates mRNA nuclear export.

Product:

1 mg/ml in Phosphate buffered saline (PBS) with 0.05% sodium azide, approx. pH 7.2.

Molecular Weight:

~ 48 kDa

Swiss-Prot:

Q07666

Purification&Purity:

The antibody was affinity-purified from rabbit antiserum by affinity-chromatography using epitope-specific immunogen and the purity is > 95% (by SDS-PAGE).

Applications:

WB: 1:500~1:1000

IHC: 1:50~1:200

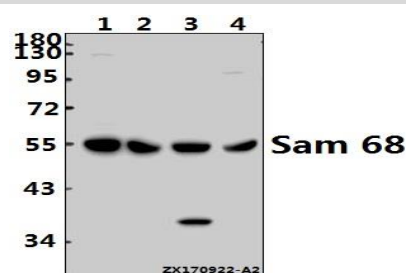
Storage&Stability:

Store at 4 °C short term. Aliquot and store at -20 °C long term. Avoid freeze-thaw cycles.

Specificity:

Sam 68 (Y145) polyclonal antibody detects endogenous levels of Sam 68 protein.

DATA:



Western blot (WB) analysis of Sam 68 (Y145) pAb at 1:1000 dilution

Lane1:HCC827 whole cell lysate(40ug)

Lane2:Hela whole cell lysate(40ug)

Lane3:H9C2 whole cell lysate(40ug)

Lane4:3T3-L1 whole cell lysate(40ug)

Note:

For research use only, not for use in diagnostic procedure.

Bioworld Technology, Inc.

Add: 1660 South Highway 100, Suite 500 St. Louis Park, MN 55416, USA.

Email: info@bioworld.com

Tel: 6123263284

Fax: 6122933841

Bioworld technology, co. Ltd.

Add: No 9, weidi road Qixia District Nanjing, 210046, P. R. China.

Email: info@biogot.com

Tel: 0086-025-68037686

Fax: 0086-025-68035151