

## Synphilin-1 (R846) polyclonal antibody

Catalog: BS2939

Host: Rabbit

Reactivity: Human, Mouse, Rat

### BackGround:

Synphilin-1 ( $\alpha$ -synuclein interacting protein, SNCAIP) is a 919 amino acid protein that associates with  $\alpha$ -synuclein and promotes the formation of cytosolic inclusions in neuronal cells. The synuclein family members, including  $\alpha$ -synuclein and  $\beta$ -synuclein, are predominantly expressed in the brain, where they influence synaptic regulation and neuronal plasticity. Synphilin-1 contains modular protein domains, such as ankyrin-like repeats and a coiled-coil domain. While both  $\alpha$ -synuclein and synphilin-1 are coexpressed in Lewy bodies of patients with Parkinson's disease, only mutations in the gene for  $\alpha$ -synuclein have been determined to confer pathogenicity.

### Product:

1 mg/ml in Phosphate buffered saline (PBS) with 0.05% sodium azide, approx. pH 7.2.

### Molecular Weight:

~ 100 kDa

### Swiss-Prot:

Q9Y6H5

### Purification&Purity:

The antibody was affinity-purified from rabbit antiserum by affinity-chromatography using epitope-specific immunogen and the purity is > 95% (by SDS-PAGE).

### Applications:

WB: 1:500~1:1000

IHC: 1:50~1:200

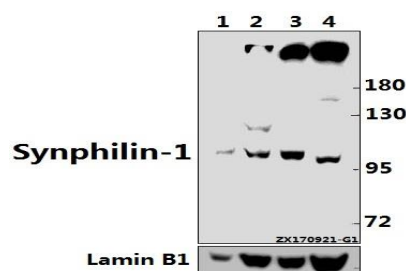
### Storage&Stability:

Store at 4 °C short term. Aliquot and store at -20 °C long term. Avoid freeze-thaw cycles.

### Specificity:

Synphilin-1 (R846) polyclonal antibody detects endogenous levels of Synphilin-1 protein.

### DATA:



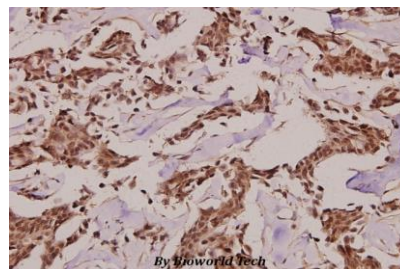
Western blot (WB) analysis of Synphilin-1 (R846) pAb at 1:500 dilution

Lane1:3T3-L1 whole cell lysate(40ug)

Lane2:C6 whole cell lysate(40ug)

Lane3:HeLa whole cell lysate(40ug)

Lane4:HEK293T whole cell lysate(40ug)



Immunohistochemistry (IHC) analyzes of Synphilin-1 (R846) pAb in paraffin-embedded human breast carcinoma tissue at 1:100.

### Note:

For research use only, not for use in diagnostic procedure.

### Bioworld Technology, Inc.

Add: 1660 South Highway 100, Suite 500 St. Louis Park, MN 55416, USA.

Email: [info@bioworld.com](mailto:info@bioworld.com)

Tel: 6123263284

Fax: 6122933841

### Bioworld technology, co. Ltd.

Add: No 9, weidi road Qixia District Nanjing, 210046, P. R. China.

Email: [info@biogot.com](mailto:info@biogot.com)

Tel: 0086-025-68037686

Fax: 0086-025-68035151