

## STEAP1 (D31) polyclonal antibody

Catalog: BS2937

Host: Rabbit

Reactivity: Human, Mouse, Rat

### BackGround:

STEAP is unique among the currently known prostate cancer markers because of its putative secondary structure, from which one may predict that it functions as a potential channel protein. STEAP is strongly expressed in advanced prostate cancer and some extent expression in other cancers, such as colon and ovarian cancer cell lines.

### Product:

1 mg/ml in Phosphate buffered saline (PBS) with 0.05% sodium azide, approx. pH 7.2.

### Molecular Weight:

~ 40 kDa

### Swiss-Prot:

Q9UHE8

### Purification&Purity:

The antibody was affinity-purified from rabbit antiserum by affinity-chromatography using epitope-specific immunogen and the purity is > 95% (by SDS-PAGE).

### Applications:

IHC: 1:50~1:200

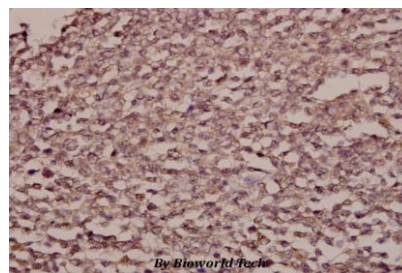
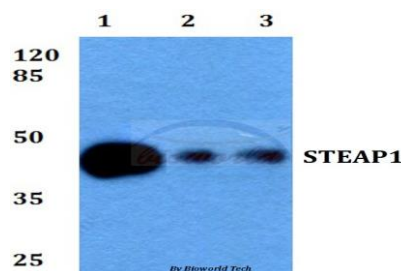
### Storage&Stability:

Store at 4 °C short term. Aliquot and store at -20 °C long term. Avoid freeze-thaw cycles.

### Specificity:

STEAP1 (D31) polyclonal antibody detects endogenous levels of STEAP1 protein.

### DATA:



Immunohistochemistry (IHC) analyzes of STEAP1 (D31) pAb in paraffin-embedded human tonsil carcinoma tissue at 1:50.

### Note:

For research use only, not for use in diagnostic procedure.

### Bioworld Technology, Inc.

Add: 1660 South Highway 100, Suite 500 St. Louis Park, MN 55416, USA.

Email: [info@bioworld.com](mailto:info@bioworld.com)

Tel: 6123263284

Fax: 6122933841

### Bioworld technology, co. Ltd.

Add: No 9, weidi road Qixia District Nanjing, 210046, P. R. China.

Email: [info@biogot.com](mailto:info@biogot.com)

Tel: 0086-025-68037686

Fax: 0086-025-68035151