

BRCAA1 (D810) polyclonal antibody

Catalog: BS2935

Host: Rabbit

Reactivity: Human, Mouse, Rat

BackGround:

The breast cancer-associated antigen BRCAA1, also designated ARID domaincontaining protein 4B (ARID4B), Sin3-associated polypeptide p180 (SAP180), or Retinoblastoma-binding protein 1-like 1 (RBBP1L1 or RBP1L1), shares 37% amino acid identity and an identical antigen epitope, SSKKQKRSHK, with Rb binding protein 1. High expression of BRCAA1 mRNA has been found in human breast, lung, colon, pancreatic and ovarian cancers, as well as in normal testis. This expression pattern indicates that BRCAA1 can be used as a molecular marker for a broad range of human malignancies. BRCAA1 also interacts with RBBP1/ARID4A and regulates genomic imprinting at the Prader-Willi syndrome (PWS)/Angelman syndrome (AS) domain.

Product:

1 mg/ml in Phosphate buffered saline (PBS) with 0.05% sodium azide, approx. pH 7.2.

Molecular Weight:

~ 150 kDa

Swiss-Prot:

Q4LE39

Purification&Purity:

The antibody was affinity-purified from rabbit antiserum by affinity-chromatography using epitope-specific immunogen and the purity is > 95% (by SDS-PAGE).

Applications:

WB: 1:500~1:1000

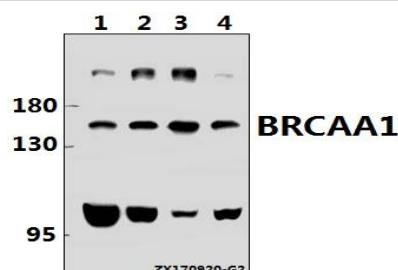
Storage&Stability:

Store at 4 °C short term. Aliquot and store at -20 °C long term. Avoid freeze-thaw cycles.

Specificity:

BRCAA1 (D810) polyclonal antibody detects endogenous levels of BRCAA1 protein.

DATA:



Western blot (WB) analysis of BRCAA1 (D810) pAb at 1:500 dilution

Lane1:Hela whole cell lysate(40ug)

Lane2:A2780 whole cell lysate(40ug)

Lane3:SK-OVCAR3 whole cell lysate(40ug)

Lane4:H9C2 whole cell lysate(40ug)

Note:

For research use only, not for use in diagnostic procedure.

Bioworld Technology, Inc.

Add: 1660 South Highway 100, Suite 500 St. Louis Park, MN 55416, USA.

Email: info@bioworld.com

Tel: 6123263284

Fax: 6122933841

Bioworld technology, co. Ltd.

Add: No 9, weidi road Qixia District Nanjing, 210046, P. R. China.

Email: info@biogol.com

Tel: 0086-025-68037686

Fax: 0086-025-68035151