

CRF (R153) polyclonal antibody

Catalog: BS2869

Host: Rabbit

Reactivity: Human, Mouse, Rat

BackGround:

Individuals suffering from Alzheimer's disease (AD) exhibit dramatic reductions in the content of corticotropin-releasing factor (CRF), increased expression of CRF receptors (CRFRs) and abnormalities in neuronal morphology in affected brain areas. In addition, AD patients show decreased concentrations of CRF in their cerebrospinal fluid, which may contribute to their cognitive impairment. A high affinity CRF binding protein, designated CRF-BP, has been discovered in post-mortem brain samples from AD patients. CRF-BP serves to bind and inactivate CRF, reducing the pool of "free CRF" available to bind CRFRs. Two CRFRs, designated CRF-RI and CRF-RII, have been described and exhibit distinct brain localizations.

Product:

1 mg/ml in Phosphate buffered saline (PBS) with 0.05% sodium azide, approx. pH 7.2.

Molecular Weight:

~ 21 kDa

Swiss-Prot:

P06850

Purification&Purity:

The antibody was affinity-purified from rabbit antiserum by affinity-chromatography using epitope-specific immunogen and the purity is > 95% (by SDS-PAGE).

Applications:

IHC: 1:50~1:200

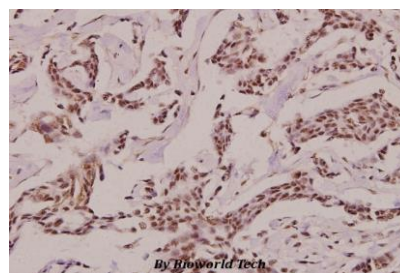
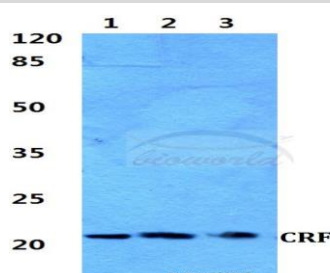
Storage&Stability:

Store at 4 °C short term. Aliquot and store at -20 °C long term. Avoid freeze-thaw cycles.

Specificity:

CRF (R153) polyclonal antibody detects endogenous levels of CRF protein.

DATA:



Immunohistochemistry (IHC) analyzes of CRF (R153) pAb in paraffin-embedded human breast carcinoma tissue at 1:100.

Note:

For research use only, not for use in diagnostic procedure.

Bioworld Technology, Inc.

Add: 1660 South Highway 100, Suite 500 St. Louis Park, MN 55416, USA.

Email: info@bioworld.com

Tel: 6123263284

Fax: 6122933841

Bioworld technology, co. Ltd.

Add: No 9, weidi road Qixia District Nanjing, 210046, P. R. China.

Email: info@biogot.com

Tel: 0086-025-68037686

Fax: 0086-025-68035151