

BRCA2 (N60) polyclonal antibody

Catalog: BS2864

Host: Rabbit

Reactivity: Human, Mouse, Rat

BackGround:

BRCA 2 is localized to chromosome 13q12 - q13. Loss of heterozygosity of 13q is observed in 25% of sporadic breast tumors, which indicates that BRCA 2 might be a tumor suppressor gene. BRCA 2 confers only a low ovarian cancer risk. Reportedly, in MCF-10F (normal breast epithelial cell line) and MCF-7 (breast cancer cell line) cells the expression of BRCA 2 RNA lowers in G0 and early G1 phases then gets up-regulated at the G1 / S phase junction.

Product:

1 mg/ml in Phosphate buffered saline (PBS) with 0.05% sodium azide, approx. pH 7.2.

Molecular Weight:

~ 384 kDa

Swiss-Prot:

P51587

Purification&Purity:

The antibody was affinity-purified from rabbit antiserum by affinity-chromatography using epitope-specific immunogen and the purity is > 95% (by SDS-PAGE).

Applications:

IHC: 1:50~1:200

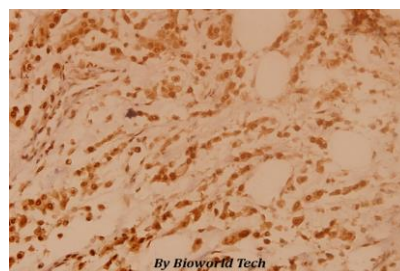
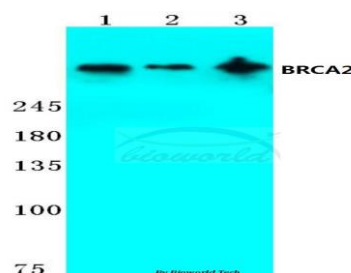
Storage&Stability:

Store at 4 °C short term. Aliquot and store at -20 °C long term. Avoid freeze-thaw cycles.

Specificity:

BRCA2 (N60) polyclonal antibody detects endogenous levels of BRCA2 protein.

DATA:



Immunohistochemistry (IHC) analyzes of BRCA2 (N60) pAb in paraffin-embedded human breast carcinoma tissue at 1:100.

Note:

For research use only, not for use in diagnostic procedure.

Bioworld Technology, Inc.

Add: 1660 South Highway 100, Suite 500 St. Louis Park, MN 55416, USA.

Email: info@bioworld.com

Tel: 6123263284

Fax: 6122933841

Bioworld technology, co. Ltd.

Add: No 9, weidi road Qixia District Nanjing, 210046, P. R. China.

Email: info@biogot.com

Tel: 0086-025-68037686

Fax: 0086-025-68035151