

Peropsin (D237) polyclonal antibody

Catalog: BS2863

Host: Rabbit

Reactivity: Human, Mouse, Rat

BackGround:

Peropsin is a visual pigment-like protein identified following large-scale sequencing of cDNAs derived from human ocular tissues. Peropsin mRNA is found in the retinal pigment epithelium (RPE) of the eye. Peropsin immunoreactivity, localizes the protein to the apical face of the RPE, and most prominently to the microvilli that surround the photoreceptor outer segments. It is thought that Peropsin may play a role in RPE physiology either in light detection as well as monitoring the concentration of retinoids (or other photoreceptor-derived compounds). It may play a role in retinal pigment epithelium physiology either by detecting light directly or by monitoring the concentration of retinoids or other photoreceptor-derived compounds.

Product:

1 mg/ml in Phosphate buffered saline (PBS) with 0.05% sodium azide, approx. pH 7.2.

Molecular Weight:

~ 37 kDa

Swiss-Prot:

O14718

Purification&Purity:

The antibody was affinity-purified from rabbit antiserum by affinity-chromatography using epitope-specific immunogen and the purity is > 95% (by SDS-PAGE).

Applications:

WB: 1:500~1:1000

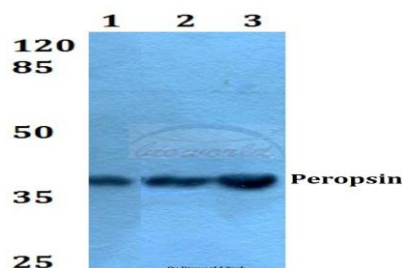
Storage&Stability:

Store at 4 °C short term. Aliquot and store at -20 °C long term. Avoid freeze-thaw cycles.

Specificity:

Peropsin (D237) polyclonal antibody detects endogenous levels of Peropsin protein.

DATA:



Western blot (WB) analysis of Peropsin (D237) polyclonal antibody at 1:500 dilution

Lane1: Jurkat whole cell lysate

Lane2: Raw264.7 whole cell lysate

Lane3: PC12 whole cell lysate

Note:

For research use only, not for use in diagnostic procedure.

Bioworld Technology, Inc.

Add: 1660 South Highway 100, Suite 500 St. Louis Park, MN 55416, USA.

Email: info@bioworld.com

Tel: 6123263284

Fax: 6122933841

Bioworld technology, co. Ltd.

Add: No 9, weidi road Qixia District Nanjing, 210046, P. R. China.

Email: info@biogot.com

Tel: 0086-025-68037686

Fax: 0086-025-68035151