

PSGR (F237) polyclonal antibody

Catalog: BS2837

Host: Rabbit

Reactivity: Human, Mouse, Rat

BackGround:

PSGR (prostate-specific G-protein coupled receptor), also known as OR51E2 (olfactory receptor 51E2), is a 320 amino acid multi-pass membrane protein that belongs to the olfactory receptor subfamily of G-protein coupled receptors. Expressed exclusively in prostate tissue and up-regulated in prostate cancer, PSGR functions as an odorant receptor that binds odorant molecules and triggers the perception of smell.

Product:

1 mg/ml in Phosphate buffered saline (PBS) with 0.05% sodium azide, approx. pH 7.2.

Molecular Weight:

~ 35 kDa

Swiss-Prot:

Q9H255

Purification&Purity:

The antibody was affinity-purified from rabbit antiserum by affinity-chromatography using epitope-specific immunogen and the purity is > 95% (by SDS-PAGE).

Applications:

WB: 1:500~1:1000

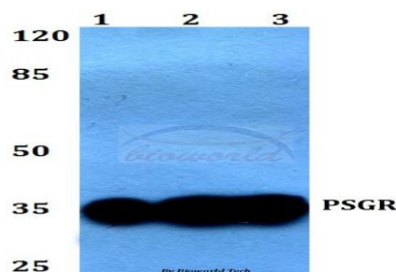
Storage&Stability:

Store at 4 °C short term. Aliquot and store at -20 °C long term. Avoid freeze-thaw cycles.

Specificity:

PSGR (F237) polyclonal antibody detects endogenous levels of PSGR protein

DATA:

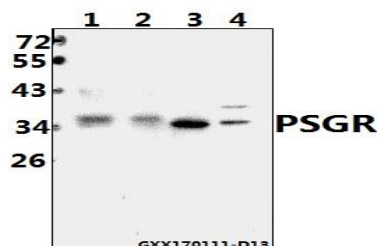


Western blot (WB) analysis of PSGR (F237) polyclonal antibody at 1:500 dilution

Lane1: Jurkat whole cell lysate

Lane2: Raw264.7 whole cell lysate

Lane3: PC12 whole cell lysate



Western blot (WB) analysis of PSGR (F237) pAb at 1:500 dilution

Lane1: PC3 whole cell lysate (40ug)

Lane2: L02 whole cell lysate (40ug)

Lane3: AML-12 whole cell lysate (40ug)

Lane4: H9C2 whole cell lysate (40ug)

Note:

For research use only, not for use in diagnostic procedure.

Bioworld Technology, Inc.

Add: 1660 South Highway 100, Suite 500 St. Louis Park, MN 55416, USA.

Email: info@bioworld.com

Tel: 6123263284

Fax: 6122933841

Bioworld technology, co. Ltd.

Add: No 9, weidi road Qixia District Nanjing, 210046, P. R. China.

Email: info@biogot.com

Tel: 0086-025-68037686

Fax: 0086-025-68035151