

## Acrp30 (R55) polyclonal antibody

Catalog: BS2833

Host: Rabbit

Reactivity: Human, Mouse, Rat

### BackGround:

Adiponectin, also termed AdipoQ, Acrp30, apM1 and GBP28, is an adipokine expressed exclusively in brown and white adipocytes. It is secreted into the blood and exists in three major forms: a low molecular weight trimer, a medium molecular weight hexamer and a high molecular weight multimer. Adiponectin levels are decreased in obese and insulin-resistant mice and humans, suggesting that this adipokine is critical to maintain insulin sensitivity. Adiponectin stimulates the phosphorylation of AMPK $\alpha$  at Thr172 and activates AMPK in skeletal muscle. It also stimulates glucose uptake in myocytes. The block of AMPK activation by a dominant-negative AMPK $\alpha$ 2 isoform inhibits the effect of adiponectin on glucose uptake, indicating that adiponectin stimulates glucose uptake and increases insulin sensitivity through its action on AMPK. Adiponectin mutants that are not able to form oligomers larger than trimers have no effect on the AMPK pathway. Mutations that render adiponectin unable to form high molecular weight multimers are associated with human diabetes, indicating the importance of multimerization for adiponectin activity.

### Product:

1 mg/ml in Phosphate buffered saline (PBS) with 0.05% sodium azide, approx. pH 7.2.

### Molecular Weight:

~ 27 kDa

### Swiss-Prot:

Q15848

### Purification&Purity:

The antibody was affinity-purified from rabbit antiserum

by affinity-chromatography using epitope-specific immunogen and the purity is > 95% (by SDS-PAGE).

### Applications:

WB: 1:500~1:1000

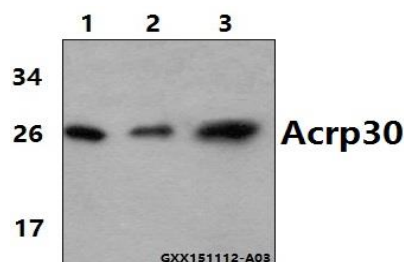
### Storage&Stability:

Store at 4 °C short term. Aliquot and store at -20 °C long term. Avoid freeze-thaw cycles.

### Specificity:

Acrp30 (R55) polyclonal antibody detects endogenous levels of Acrp30 protein.

### DATA:



Western blot (WB) analysis of Acrp30 (R55) polyclonal antibody at 1:1000 dilution

Lane1: MCF-7 whole cell lysate (40ug)

Lane2: The testis tissue lysate of Mouse (40ug)

Lane3: The liver tissue lysate of Rat (40ug)

### Note:

For research use only, not for use in diagnostic procedure.

### Bioworld Technology, Inc.

Add: 1660 South Highway 100, Suite 500 St. Louis Park, MN 55416, USA.

Email: [info@bioworld.com](mailto:info@bioworld.com)

Tel: 6123263284

Fax: 6122933841

### Bioworld technology, co. Ltd.

Add: No 9, weidi road Qixia District Nanjing, 210046, P. R. China.

Email: [info@biogot.com](mailto:info@biogot.com)

Tel: 0086-025-68037686

Fax: 0086-025-68035151