

## PI3K p85 $\beta$ (Q496) polyclonal antibody

Catalog: BS2827

Host: Rabbit

Reactivity: Human, Mouse, Rat

### BackGround:

Phosphatidylinositol 3-kinase (PI 3-kinase) is composed of p85 and p110 subunits. p85 lacks PI 3-kinase activity and acts as an adapter, coupling p110 to activated protein tyrosine kinase. Two forms of p85 have been described (p85 $\alpha$  and p85 $\beta$ ), each possessing one SH3 and two SH2 domains. Various p110 isoforms have been identified. p110 $\alpha$  and p110 $\beta$  interact with p85 $\alpha$ , and p110 $\alpha$  has also been shown to interact with p85 $\beta$  in vitro. p110 $\delta$  expression is restricted to white blood cells. It has been shown to bind p85 $\alpha$  and p85 $\beta$ , but it apparently does not phosphorylate these subunits. p110 $\delta$  seems to have the capacity to autophosphorylate. p110 $\gamma$  does not interact with the p85 subunits. It has been shown to be activated by  $\alpha$  and  $\beta\gamma$  heterotrimeric G proteins.

### Product:

1 mg/ml in Phosphate buffered saline (PBS) with 0.05% sodium azide, approx. pH 7.2.

### Molecular Weight:

~ 85 kDa

### Swiss-Prot:

O00459

### Purification&Purity:

The antibody was affinity-purified from rabbit antiserum by affinity-chromatography using epitope-specific immunogen and the purity is > 95% (by SDS-PAGE).

### Applications:

WB: 1:500~1:1000

IHC: 1:50~1:200

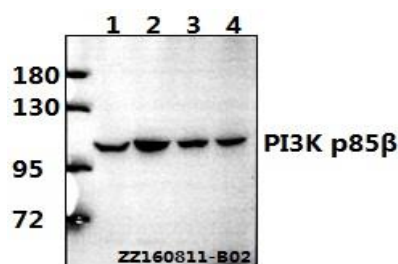
### Storage&Stability:

Store at 4 °C short term. Aliquot and store at -20 °C long term. Avoid freeze-thaw cycles.

### Specificity:

PI 3-kinase p85 $\beta$  (Q496) polyclonal antibody detects endogenous levels of PI 3-kinase p85 $\beta$  protein.

### DATA:



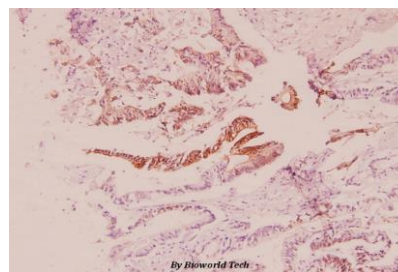
Western blot (WB) analysis of PI3K p85 $\beta$  (Q496) polyclonal antibody at 1:500 dilution

Lane1:L02 whole cell lysate(40ug)

Lane2:A549 whole cell lysate(40ug)

Lane3:C6 whole cell lysate(40ug)

Lane4:BV2 whole cell lysate(40ug)



Immunohistochemistry (IHC) analyzes of PI3K p85 $\beta$  (Q496) pAb in paraffin-embedded human colorectal cancer carcinoma tissue at 1:100.

### Note:

For research use only, not for use in diagnostic procedure.

### Bioworld Technology, Inc.

Add: 1660 South Highway 100, Suite 500 St. Louis Park, MN 55416, USA.

Email: [info@bioworld.com](mailto:info@bioworld.com)

Tel: 6123263284

Fax: 6122933841

### Bioworld technology, co. Ltd.

Add: No 9, weidi road Qixia District Nanjing, 210046, P. R. China.

Email: [info@biogot.com](mailto:info@biogot.com)

Tel: 0086-025-68037686

Fax: 0086-025-68035151