

NTR1 (H218) polyclonal antibody

Catalog: BS2820

Host: Rabbit

Reactivity: Human, Mouse

BackGround:

Neurotensin (NT) initiates an intracellular response by interacting with the G protein-coupled receptors NTR1 (NTS1 receptor, high affinity NTR) and NTR2 (NTS2 receptor, levocabastine-sensitive neurotensin receptor), and the type I receptor NTR3 (NTS3 receptor, sortilin-1, Gp95). NT has a wide distribution in regions of the brain and in peripheral tissues where NT receptors can contribute to hypotension, hyperglycemia, hypothermia, antinociception and regulation of intestinal motility and secretion. HL-60 cells express NTR1, which can couple to Gq, Gi/o, or Gs. Alternative splicing of rat NTR2 can generate a 5-transmembrane domain variant isoform that is co-expressed with the full-length NTR2 throughout the brain and spinal cord. NTR3 activation in the murine microglial cell line N11 induces MIP-2, MCP-1, IL-1 β and TNF α in an ERK1/2 and Akt kinase-dependent manner.

Product:

1 mg/ml in Phosphate buffered saline (PBS) with 15 mM sodium azide, approx. pH 7.2.

Molecular Weight:

~36 kDa

Swiss-Prot:

P30989

Purification&Purity:

The antibody was affinity-purified from rabbit antiserum by affinity-chromatography using epitope-specific im-

munogen and the purity is > 95% (by SDS-PAGE).

Applications:

WB: 1:500~1:1000

IHC: 1:50~1:200

IF: 1:50~1:200

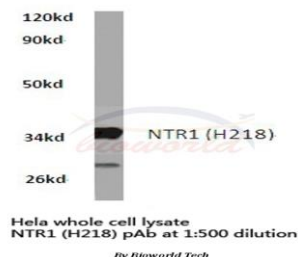
Storage&Stability:

Store at 4 °C short term. Aliquot and store at -20 °C long term. Avoid freeze-thaw cycles.

Specificity:

NTR1 (H218) polyclonal antibody detects endogenous levels of NTR1 protein.

DATA:



Western blot (WB) analysis of NTR1 (H218) polyclonal antibody in extracts from HeLa cells.

Note:

For research use only, not for use in diagnostic procedure.

Bioworld Technology, Inc.

Add: 1660 South Highway 100, Suite 500 St. Louis Park, MN 55416, USA.

Email: info@bioworld.com

Tel: 6123263284

Fax: 6122933841

Bioworld technology, co. Ltd.

Add: No 9, weidi road Qixia District Nanjing, 210046, P. R. China.

Email: info@biogot.com

Tel: 0086-025-68037686

Fax: 0086-025-68035151