

IP6K2 (L188) polyclonal antibody

Catalog: BS2759

Host: Rabbit

Reactivity: Human, Mouse, Rat

BackGround:

The members of the inositol hexakisphosphate kinase family, IP6K1 and IP6K2, have a high affinity and selectivity for inositol hexakisphosphate (InsP6) as a substrate. IP6K1 and IP6K2 (also designated PiUS) convert InsP6 to PP-InsP5. However, neither kinase demonstrates any catalytic activity with other inositol pyrophosphates. The presence of InsP6, which inhibits serine/threonine protein phosphatases, increases the influx of calcium across the plasma membrane and implies that it may mediate the regulation of insulin exocytosis. IP6K1 was purified as a 54 kDa protein in rat brain extracts. By homology, IP6K1 and IP6K2 were characterized in mouse as a 50 kDa and 49 kDa protein, respectively. IP6K1 displays ATP synthase activity by transferring a phosphate from PP-InsP5 to ADP, which suggests a role for the IP6 kinases as high energy phosphate donors.

Product:

1 mg/ml in Phosphate buffered saline (PBS) with 15 mM sodium azide, approx. pH 7.2.

Molecular Weight:

~ 52 kDa

Swiss-Prot:

Q9UHH9

Purification&Purity:

The antibody was affinity-purified from rabbit antiserum by affinity-chromatography using epitope-specific immunogen and the purity is > 95% (by SDS-PAGE).

Applications:

WB: 1:500~1:1000

IHC: 1:50~1:200

IF: 1:50~1:200

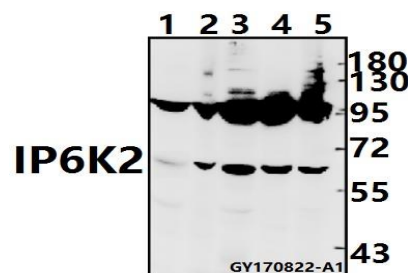
Storage&Stability:

Store at 4 °C short term. Aliquot and store at -20 °C long term. Avoid freeze-thaw cycles.

Specificity:

IP6K2 (L188) polyclonal antibody detects endogenous levels of IP6K2 protein.

DATA:



Western blot (WB) analysis of IP6K2 (L188) pAb at 1:500 dilution

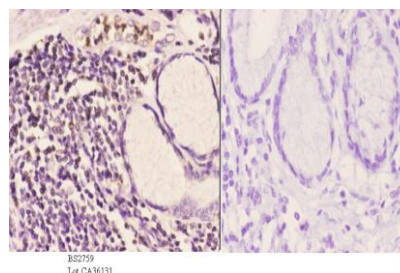
Lane1:CT26 whole cell lysate(40ug)

Lane2:C6 whole cell lysate(40ug)

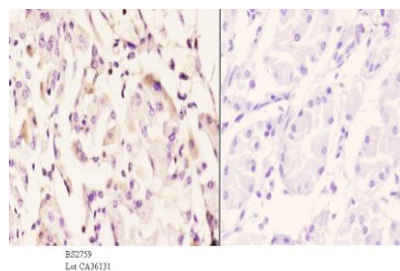
Lane3:Panc1 whole cell lysate(40ug)

Lane4:HCT116 whole cell lysate(40ug)

Lane5:A549 whole cell lysate(40ug)



Immunohistochemistry (IHC) analyzes of IP6K2 (L188) pAb in paraffin-embedded human esophageal carcinoma tissue at 1:50. showing cytoplasmic and nucleus staining. Negative control (the right) Using PBS instead of primary antibody, secondary antibody is Goat Anti-Rabbit IgG-biotin followed by avidin-peroxidase.



Immunohistochemistry (IHC) analyzes of IP6K2 (L188) pAb in paraffin-embedded human esophageal carcinoma tissue at 1:50. showing cytoplasmic and nucleus staining. Negative control (the right) Using PBS instead of primary antibody, secondary antibody is Goat Anti-Rabbit IgG-biotin followed by avidin-peroxidase.

Bioworld Technology, Inc.

Add: 1660 South Highway 100, Suite 500 St. Louis Park, MN 55416, USA.

Email: info@bioworld.com

Tel: 6123263284

Fax: 6122933841

Bioworld technology, co. Ltd.

Add: No 9, weidi road Qixia District Nanjing, 210046, P. R. China.

Email: info@biogot.com

Tel: 0086-025-68037686

Fax: 0086-025-68035151



PRODUCT DATA SHEET

Bioworld Technology, Inc.

fin-embedded human stomach carcinoma tissue at 1:50. showing cytoplasmic and nucleus staining. Negative control (the right) Using PBS instead of primary antibody, secondary antibody is Goat Anti-Rabbit

IgG-biotin followed by avidin-peroxidase.

Note:

For research use only, not for use in diagnostic procedure.

Bioworld Technology, Inc.

Add: 1660 South Highway 100, Suite 500 St. Louis Park,
MN 55416, USA.

Email: info@bioworld.com

Tel: 6123263284

Fax: 6122933841

Bioworld technology, co. Ltd.

Add: No 9, weidi road Qixia District Nanjing, 210046,
P. R. China.

Email: info@biogot.com

Tel: 0086-025-68037686

Fax: 0086-025-68035151