

NMBR (L264) polyclonal antibody

Catalog: BS2737

Host: Rabbit

Reactivity: Human, Mouse, Rat

BackGround:

The bombesin receptor family includes the gastrin-releasing peptide (GRPR) and neuromedin B (NMBR) receptors. Both receptors are expressed in various brain regions and in the digestive tract. NMBR belongs to the G protein-coupled receptor 1 family. The gene encoding NMBR protein maps to chromosome 6q21-qter. NMBR, an integral membrane protein, binds neuromedin B, a mitogen and growth factor for gastrointestinal epithelial tissue and normal and neoplastic lung.

Product:

1 mg/ml in Phosphate buffered saline (PBS) with 0.05% sodium azide, approx. pH 7.2.

Molecular Weight:

~ 43 kDa

Swiss-Prot:

P28336

Purification&Purity:

The antibody was affinity-purified from rabbit antiserum by affinity-chromatography using epitope-specific immunogen and the purity is > 95% (by SDS-PAGE).

Applications:

IHC: 1:50~1:200

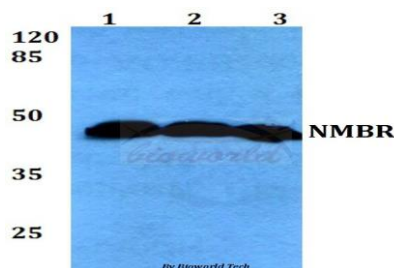
IF: 1:50~1:200

Storage&Stability:

Store at 4 °C short term. Aliquot and store at -20 °C long term. Avoid freeze-thaw cycles.

Specificity:

NMBR (L264) polyclonal antibody detects endogenous levels of NMBR protein.

DATA:**Note:**

For research use only, not for use in diagnostic procedure.

Bioworld Technology, Inc.

Add: 1660 South Highway 100, Suite 500 St. Louis Park, MN 55416, USA.

Email: info@bioworld.com

Tel: 6123263284

Fax: 6122933841

Bioworld technology, co. Ltd.

Add: No 9, weidi road Qixia District Nanjing, 210046, P. R. China.

Email: info@biogol.com

Tel: 0086-025-68037686

Fax: 0086-025-68035151