

## Kir6.2 (V220) polyclonal antibody

Catalog: BS2641

Host: Rabbit

Reactivity: Human, Mouse, Rat

### BackGround:

ATP-sensitive K<sup>+</sup> channels play important roles in many cellular functions by coupling cell metabolism to electrical activity. KIR6.1 and KIR6.2 are members of the KIR (inwardly rectifying potassium channel) family of potassium channels. Inward rectifying K<sup>+</sup> channels possess a greater tendency to allow potassium to flow into the cell rather than out of it. These channels comprise two subunits: a KIR6.0 subfamily component and a SUR component, which is a member of the ATP-binding cassette protein superfamily. Mutations in the gene coding for these channels are a cause of an autosomal recessive disorder characterized by unregulated insulin secretion. The amino-terminal and carboxyl-terminal domains of KIR channel subunits are both intracellular, and the two intracellular domains of KIR6.2 physically interact with each other.

### Product:

1 mg/ml in Phosphate buffered saline (PBS) with 0.05% sodium azide, approx. pH 7.2.

### Molecular Weight:

~ 44 kDa

### Swiss-Prot:

Q14654

### Purification&Purity:

The antibody was affinity-purified from rabbit antiserum by affinity-chromatography using epitope-specific immunogen and the purity is > 95% (by SDS-PAGE).

### Applications:

IHC: 1:50~1:200

IF: 1:50~1:200

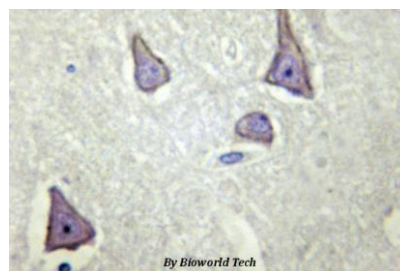
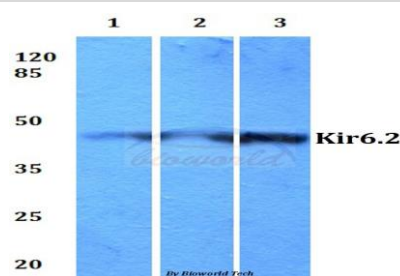
### Storage&Stability:

Store at 4 °C short term. Aliquot and store at -20 °C long term. Avoid freeze-thaw cycles.

### Specificity:

Kir6.2 (V220) polyclonal antibody detects endogenous levels of Kir6.2 protein.

### DATA:



Immunohistochemistry (IHC) analyzes of Kir6.2 (V220) pAb in paraffin-embedded human brain tissue.

### Note:

For research use only, not for use in diagnostic procedure.

### Bioworld Technology, Inc.

Add: 1660 South Highway 100, Suite 500 St. Louis Park, MN 55416, USA.

Email: [info@bioworld.com](mailto:info@bioworld.com)

Tel: 6123263284

Fax: 6122933841

### Bioworld technology, co. Ltd.

Add: No 9, weidi road Qixia District Nanjing, 210046, P. R. China.

Email: [info@biogot.com](mailto:info@biogot.com)

Tel: 0086-025-68037686

Fax: 0086-025-68035151