

MCH-2R (M332) polyclonal antibody

Catalog: BS2629

Host: Rabbit

Reactivity: Human, Mouse, Rat

BackGround:

Melanin-concentrating hormone (MCH) is a 19 amino acid cyclic neuropeptide, which is mainly expressed in the hypothalamus. MCH modulates feeding behavior, aggression, anxiety, arousal and reproductive function in mammals by controlling the release of luteinizing hormone (LH). The melanin-concentrating hormone receptor (MCHR, also designated SLC-1) is a glycosylated G-protein coupled receptor that migrates between 45-50 kDa on SDS-PAGE. MCHR mediates the effects of MCH through Gai and/or Gaq signaling and is expressed in several regions of the brain, including the cerebral cortex, amygdala, thalamus and hypothalamus. MCH and MCHR have also been implicated in stimulating leptin expression and secretion in adipocytes, which suggests that the melanin-concentrating hormone and its receptor may be potential targets for modulating obesity.

Product:

1 mg/ml in Phosphate buffered saline (PBS) with 0.05% sodium azide, approx. pH 7.2.

Molecular Weight:

~ 38 kDa

Swiss-Prot:

Q969V1

Purification&Purity:

The antibody was affinity-purified from rabbit antiserum by affinity-chromatography using epitope-specific immunogen and the purity is > 95% (by SDS-PAGE).

Applications:

IHC: 1:50~1:200

IF: 1:50~1:200

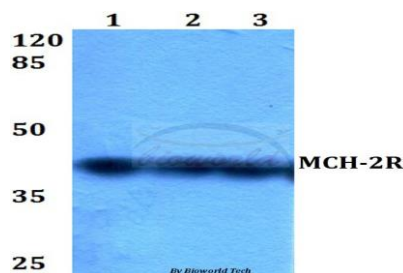
Storage&Stability:

Store at 4 °C short term. Aliquot and store at -20 °C long term. Avoid freeze-thaw cycles.

Specificity:

MCH-2R (M332) polyclonal antibody detects endogenous levels of MCH-2R protein.

DATA:



Note:

For research use only, not for use in diagnostic procedure.

Bioworld Technology, Inc.

Add: 1660 South Highway 100, Suite 500 St. Louis Park, MN 55416, USA.

Email: info@bioworld.com

Tel: 6123263284

Fax: 6122933841

Bioworld technology, co. Ltd.

Add: No 9, weidi road Qixia District Nanjing, 210046, P. R. China.

Email: info@biogot.com

Tel: 0086-025-68037686

Fax: 0086-025-68035151