

## MYH (Y176) polyclonal antibody

Catalog: BS2535

Host: Rabbit

Reactivity: Human, Mouse, Rat

### BackGround:

MYH (mutY homolog (E. coli)) is a DNA glycosylase mismatch repair enzyme that in conjunction with mutM (OGG1), cleaves adenine residues paired with either oxidized (8-hydroxyguanine) or non-modified guanines in order to correct A/G and A/C mismatches. Repair of most modified and mispaired bases in the genome is initiated by DNA glycosylases, which bind and cleave N-glycosyl bonds to initiate base excision repair. MYH is crucial for the avoidance of mutations resulting from oxidative DNA damage. Multiple N-terminal splice variants of MYH exist in mammalian cells. Increasing levels of MYH in A549 cells exposed to oxygen and infrared radiation leads to improvements in cell survival. Biallelic MYH germ-line mutations predispose humans to colorectal adenomas and carcinomas. MYH is abundant in neurons where mitochondrial genomes exposed to reactive oxygen species (ROS) that damage DNA must maintain integrity over the entire mammalian life span.

### Product:

1 mg/ml in Phosphate buffered saline (PBS) with 0.05% sodium azide, approx. pH 7.2.

### Molecular Weight:

~ 60 kDa

### Swiss-Prot:

Q9UIF7

### Purification&Purity:

The antibody was affinity-purified from rabbit antiserum by affinity-chromatography using epitope-specific immunogen and the purity is > 95% (by SDS-PAGE).

### Applications:

WB: 1:500~1:1000

IHC: 1:50~1:200

IF: 1:50~1:200

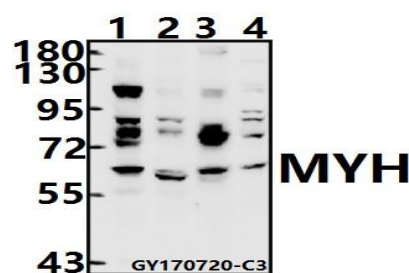
### Storage&Stability:

Store at 4 °C short term. Aliquot and store at -20 °C long term. Avoid freeze-thaw cycles.

### Specificity:

MYH (Y176) polyclonal antibody detects endogenous levels of MYH protein.

### DATA:



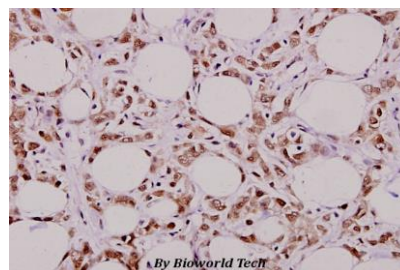
Western blot (WB) analysis of MYH (Y176) pAb at 1:500 dilution

Lane1:K562 whole cell lysate(40ug)

Lane2:U-87MG whole cell lysate(40ug)

Lane3:C6 whole cell lysate(40ug)

Lane4:AML-12 whole cell lysate(40ug)



Immunohistochemistry (IHC) analyzes of MYH (Y176) pAb in paraffin-embedded human breast carcinoma tissue at 1:50.

### Note:

For research use only, not for use in diagnostic procedure.

### Bioworld Technology, Inc.

Add: 1660 South Highway 100, Suite 500 St. Louis Park, MN 55416, USA.

Email: [info@bioworld.com](mailto:info@bioworld.com)

Tel: 6123263284

Fax: 6122933841

### Bioworld technology, co. Ltd.

Add: No 9, weidi road Qixia District Nanjing, 210046, P. R. China.

Email: [info@biogot.com](mailto:info@biogot.com)

Tel: 0086-025-68037686

Fax: 0086-025-68035151