

PFKFB2 (Y14) polyclonal antibody

Catalog: BS2458

Host: Rabbit

Reactivity: Human, Mouse, Rat

BackGround:

PFK-1 undergoes activation in the presence of elevated AMP. The most potent activator is fructose-2,6-bisphosphate, which is produced by PFK-2 from the same substrate, fructose 6-phosphate. PFK-2 is bi-functional and a key regulator for PFK-1. PFK-2 catalyzes the synthesis of fructose-2,6-bisphosphate, and contains fructose-2,6-bisphosphatase activity that catalyzes the degradation of fructose-2,6-bisphosphate. PFK-2 is dimeric and isoenzymes include PFK-2 liver (PFKFB1, PFRX), PFK-2 cardiac (PFKFB2), PFK-2 placental (PFKFB3, inducible PFK-2) and PFK-2 testis (PFKFB4).

Product:

1 mg/ml in Phosphate buffered saline (PBS) with 0.05% sodium azide, approx. pH 7.2.

Molecular Weight:

~ 58 kDa

Swiss-Prot:

O60825

Purification&Purity:

The antibody was affinity-purified from rabbit antiserum by affinity-chromatography using epitope-specific immunogen and the purity is > 95% (by SDS-PAGE).

Applications:

WB: 1:500~1:1000

IHC: 1:50~1:200

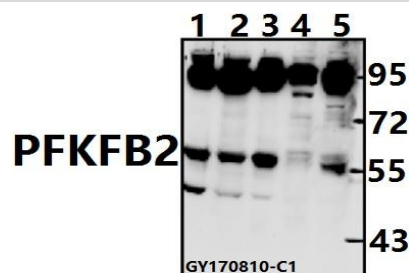
Storage&Stability:

Store at 4 °C short term. Aliquot and store at -20 °C long term. Avoid freeze-thaw cycles.

Specificity:

PFKFB2 (Y14) polyclonal antibody detects endogenous levels of PFKFB2 protein.

DATA:



Western blot (WB) analysis of PFKFB2 (Y14) pAb at 1:500 dilution

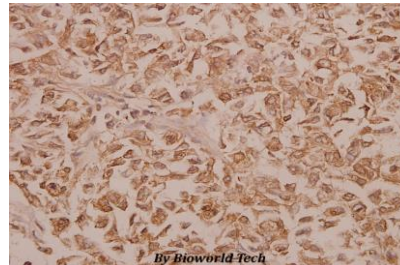
Lane1:A549 whole cell lysate(40ug)

Lane2:PC3 whole cell lysate(40ug)

Lane3:MCF-7 whole cell lysate(40ug)

Lane4:Hela whole cell lysate(40ug)

Lane5:U-87MG whole cell lysate(40ug)



Immunohistochemistry (IHC) analyzes of PFKFB2 (Y14) pAb in paraffin-embedded human colorectal carcinoma tissue at 1:50.

Note:

For research use only, not for use in diagnostic procedure.

Bioworld Technology, Inc.

Add: 1660 South Highway 100, Suite 500 St. Louis Park, MN 55416, USA.

Email: info@bioworld.com

Tel: 6123263284

Fax: 6122933841

Bioworld technology, co. Ltd.

Add: No 9, weidi road Qixia District Nanjing, 210046, P. R. China.

Email: info@biogot.com

Tel: 0086-025-68037686

Fax: 0086-025-68035151