

LMX1B (D159) polyclonal antibody

Catalog: BS2457

Host: Rabbit

Reactivity: Human, Mouse, Rat

BackGround:

The Lim class homeobox gene Lmx1b is required for the normal development of the dopaminergic system. Loss of dopaminergic neurons is associated with one of the most prominent human neurological disorders, Parkinson's disease (PD). Dopaminergic neurons play an important role in the control of multiple brain functions including voluntary movement alongside an array of behavioral processes such as mood, reward, addiction, and stress. Lmx1b is one of several transcription factors involved in the generation of dopaminergic neurons in the brain.

Product:

1 mg/ml in Phosphate buffered saline (PBS) with 15 mM sodium azide, approx. pH 7.2.

Molecular Weight:

~ 42 kDa

Swiss-Prot:

O60663

Purification&Purity:

The antibody was affinity-purified from rabbit antiserum by affinity-chromatography using epitope-specific immunogen and the purity is > 95% (by SDS-PAGE).

Applications:

WB: 1:500~1:1000

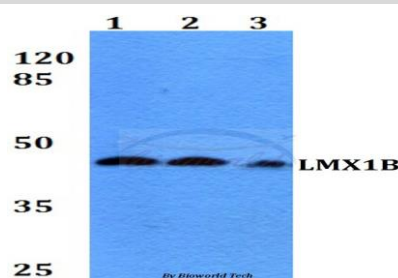
IHC: 1:50~1:200

Storage&Stability:

Store at 4 °C short term. Aliquot and store at -20 °C long term. Avoid freeze-thaw cycles.

Specificity:

LMX1B (D159) polyclonal antibody detects endogenous levels of LMX1B protein.

DATA:

Western blot (WB) analysis of LMX1B (D159) polyclonal antibody at 1:500 dilution

Lane1: HEK293T whole cell lysate

Lane2: Raw264.7 whole cell lysate

Lane3: PC12 whole cell lysate

Note:

For research use only, not for use in diagnostic procedure.

Bioworld Technology, Inc.

Add: 1660 South Highway 100, Suite 500 St. Louis Park, MN 55416, USA.

Email: info@bioworld.com

Tel: 6123263284

Fax: 6122933841

Bioworld technology, co. Ltd.

Add: No 9, weidi road Qixia District Nanjing, 210046, P. R. China.

Email: info@biogot.com

Tel: 0086-025-68037686

Fax: 0086-025-68035151