

Rad21 (D548) polyclonal antibody

Catalog: BS2422

Host: Rabbit

Reactivity: Human, Mouse, Rat

BackGround:

Rad21 is one of the major cohesin subunits that holds sister chromatids together until anaphase, when proteolytic cleavage by separase, a caspase-like enzyme, allows chromosomal separation. Rad21 interacts with Rec8 to form a cohesin complex that functions in sister chromatid alignment. Rad21 is also involved in the repair of double-strand breaks in DNA and is essential for mitotic growth. Rad21 undergoes a C-terminal cleavage induced by diverse stimuli right before apoptosis. The cleavage product migrates to the cytoplasm and is involved in early events in the apoptotic pathway and it amplifies the cell death signal in a positive-feedback manner.

Product:

1 mg/ml in Phosphate buffered saline (PBS) with 0.05% sodium azide, approx. pH 7.2.

Molecular Weight:

~ 130 kDa

Swiss-Prot:

O60216

Purification&Purity:

The antibody was affinity-purified from rabbit antiserum by affinity-chromatography using epitope-specific immunogen and the purity is > 95% (by SDS-PAGE).

Applications:

WB: 1:500~1:1000

IHC: 1:50~1:200

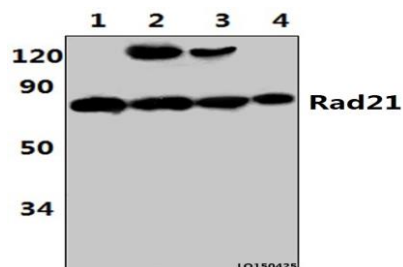
Storage&Stability:

Store at 4 °C short term. Aliquot and store at -20 °C long term. Avoid freeze-thaw cycles.

Specificity:

Rad21 (D548) polyclonal antibody detects endogenous levels of Rad21 protein.

DATA:



Western blot (WB) analysis of Rad21 (D548) polyclonal antibody at 1:1000 dilution Lane1:HELA whole cell lysate(42ug)

Lane2:NIH3T3 whole cell lysate(48ug) Lane3:RAW264.7 whole cell lysate(57ug) Lane4:H9C2 whole cell lysate(37ug)

Note:

For research use only, not for use in diagnostic procedure.

Bioworld Technology, Inc.

Add: 1660 South Highway 100, Suite 500 St. Louis Park, MN 55416, USA.

Email: info@bioworld.com

Tel: 6123263284

Fax: 6122933841

Bioworld technology, co. Ltd.

Add: No 9, weidi road Qixia District Nanjing, 210046, P. R. China.

Email: info@biogot.com

Tel: 0086-025-68037686

Fax: 0086-025-68035151