

**SR-1F (T126) polyclonal antibody**

Catalog: BS2387

Host: Rabbit

Reactivity: Human, Mouse, Rat

**BackGround:**

The members of the G protein-coupled receptor family are distinguished by their slow transmitting response to ligand binding. These seven transmembrane proteins include the adrenergic, serotonin and dopamine receptors. The effect of the signaling molecule can be excitatory or inhibitory depending on the type of receptor to which it binds.  $\beta$ -adrenergic bound to adrenaline activates adenylyl cyclase, while  $\alpha$ 2-adrenergic receptor bound to adrenaline inhibits adenylyl cyclase. Like the  $\alpha$ 2-adrenergic receptor, serotonin receptor functions are also mediated by G proteins that inhibit the activity of adenylyl cyclase. The serotonin receptors have been classified into several categories, designated SR-1-7 (5HT1-7). Subtypes within the SR-1 group include SR-1A, -1B, -1D, -1E and -1F.

**Product:**

1 mg/ml in Phosphate buffered saline (PBS) with 0.05% sodium azide, approx. pH 7.2.

**Molecular Weight:**

~ 42 kDa

**Swiss-Prot:**

P30939

**Purification&Purity:**

The antibody was affinity-purified from rabbit antiserum by affinity-chromatography using epitope-specific immunogen and the purity is > 95% (by SDS-PAGE).

**Applications:**

IHC: 1:50~1:200

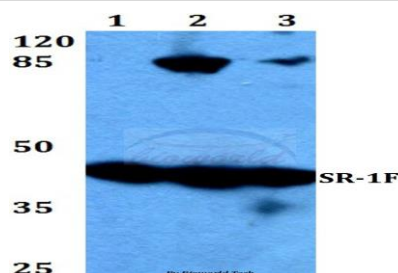
IF: 1:50~1:200

**Storage&Stability:**

Store at 4 °C short term. Aliquot and store at -20 °C long term. Avoid freeze-thaw cycles.

**Specificity:**

SR-1F (T126) polyclonal antibody detects endogenous levels of SR-1F protein.

**DATA:****Note:**

For research use only, not for use in diagnostic procedure.

**Bioworld Technology, Inc.**

Add: 1660 South Highway 100, Suite 500 St. Louis Park, MN 55416, USA.

Email: [info@bioworld.com](mailto:info@bioworld.com)

Tel: 6123263284

Fax: 6122933841

**Bioworld technology, co. Ltd.**

Add: No 9, weidi road Qixia District Nanjing, 210046, P. R. China.

Email: [info@biogol.com](mailto:info@biogol.com)

Tel: 0086-025-68037686

Fax: 0086-025-68035151