

ChoKB (E324) polyclonal antibody

Catalog: BS2377

Host: Rabbit

Reactivity: Human, Mouse, Rat

BackGround:

The major pathway for the biosynthesis of phosphatidylcholine occurs via the CDP-choline pathway. Choline kinase, the initial enzyme in the sequence, plays a role in cell growth proliferation. A related protein, ChoKB (also, known as choline kinase beta), is a 395 amino acid enzyme that catalyzes the phosphorylation of choline by ATP in the presence of magnesium, thereby yielding phosphocholine and ADP. Like all choline kinases, ChoKB possesses ethanalamine kinase activity and catalyzes the phosphorylation of ethanolamine. The gene encoding ChoKB is located less than 1 kb upstream of the CPT1B gene, suggesting that the ChoKB gene may regulate transcription CPT1B. In mice, mutations and/or deletions in the gene encoding ChoKB are the cause of hindlimb muscular dystrophy and neonatal bone deformity.

Product:

1 mg/ml in Phosphate buffered saline (PBS) with 0.05% sodium azide, approx. pH 7.2.

Molecular Weight:

~ 45 kDa

Swiss-Prot:

Q9Y259

Purification&Purity:

The antibody was affinity-purified from rabbit antiserum by affinity-chromatography using epitope-specific immunogen and the purity is > 95% (by SDS-PAGE).

Applications:

IHC: 1:50~1:200

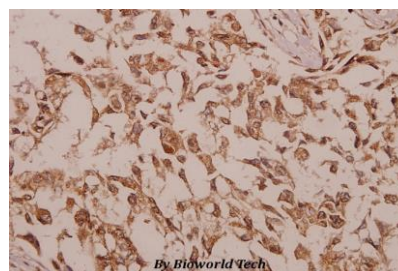
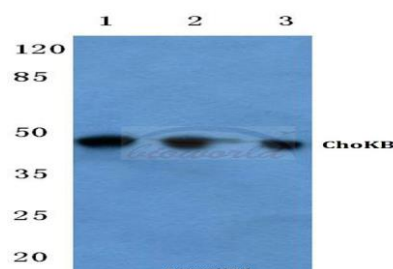
Storage&Stability:

Store at 4 °C short term. Aliquot and store at -20 °C long term. Avoid freeze-thaw cycles.

Specificity:

ChoKB (E324) polyclonal antibody detects endogenous levels of ChoKB protein.

DATA:



Immunohistochemistry (IHC) analyzes of ChoKB (E324) pAb in paraffin-embedded human colorectal carcinoma tissue at 1:50.

Note:

For research use only, not for use in diagnostic procedure.

Bioworld Technology, Inc.

Add: 1660 South Highway 100, Suite 500 St. Louis Park, MN 55416, USA.

Email: info@bioworld.com

Tel: 6123263284

Fax: 6122933841

Bioworld technology, co. Ltd.

Add: No 9, weidi road Qixia District Nanjing, 210046, P. R. China.

Email: info@biogot.com

Tel: 0086-025-68037686

Fax: 0086-025-68035151