

MRTF-A (H11) polyclonal antibody

Catalog: BS2342

Host: Rabbit

Reactivity: Human, Mouse, Rat

BackGround:

Serum response factor (SRF) is a transcription factor that binds the serum response element (SRE), a sequence that mediates the transient response of many cellular genes to growth stimulation. SRF regulates the transient response of several muscle genes in response to growth factors and recruits accessory myogenic factors to activate these muscle genes. SRF is required for the formation of vertebrate mesoderm leading to the origin of the cardiovascular system. Myocardin, in association with SRF in cardiac muscle cells, activates cardiac muscle promoters. Myocardin-related transcription factor A (MRTF-A), also known as MKL1, interacts with SRF and stimulates its transcriptional activity.

Product:

1 mg/ml in Phosphate buffered saline (PBS) with 0.05% sodium azide, approx. pH 7.2.

Molecular Weight:

~ 99 kDa

Swiss-Prot:

Q969V6

Purification&Purity:

The antibody was affinity-purified from rabbit antiserum

by affinity-chromatography using epitope-specific immunogen and the purity is > 95% (by SDS-PAGE).

Applications:

IHC: 1:50~1:200

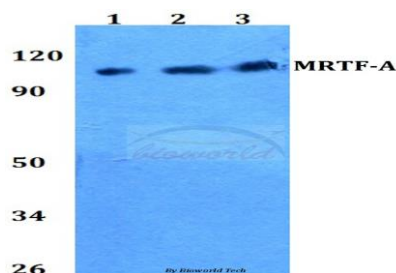
Storage&Stability:

Store at 4 °C short term. Aliquot and store at -20 °C long term. Avoid freeze-thaw cycles.

Specificity:

MRTF-A (H11) polyclonal antibody detects endogenous levels of MRTF-A protein.

DATA:



Note:

For research use only, not for use in diagnostic procedure.

Bioworld Technology, Inc.

Add: 1660 South Highway 100, Suite 500 St. Louis Park, MN 55416, USA.

Email: info@bioworld.com

Tel: 6123263284

Fax: 6122933841

Bioworld technology, co. Ltd.

Add: No 9, weidi road Qixia District Nanjing, 210046, P. R. China.

Email: info@biogol.com

Tel: 0086-025-68037686

Fax: 0086-025-68035151