

## Tra-2 $\alpha$ (G241) polyclonal antibody

Catalog: BS2305

Host: Rabbit

Reactivity: Human, Mouse, Rat

### BackGround:

TRA2A (Transformer 2 alpha) is a member of the transformer 2 homolog family and encodes a protein with two RS domains and an RRM (RNA recognition motif) domain. It is a sequence specific RNA binding protein which participates in the regulation of pre-mRNA splicing.

### Product:

1 mg/ml in Phosphate buffered saline (PBS) with 0.05% sodium azide, approx. pH 7.2.

### Molecular Weight:

~ 33 kDa

### Swiss-Prot:

Q13595

### Purification&Purity:

The antibody was affinity-purified from rabbit antiserum by affinity-chromatography using epitope-specific immunogen and the purity is > 95% (by SDS-PAGE).

### Applications:

WB: 1:500~1:1000

IHC: 1:50~1:200

IF: 1:50~1:200

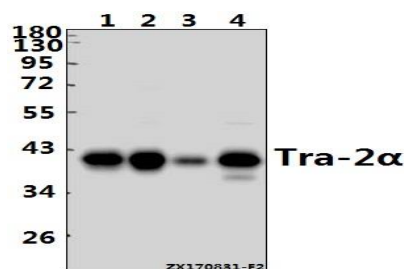
### Storage&Stability:

Store at 4 °C short term. Aliquot and store at -20 °C long term. Avoid freeze-thaw cycles.

### Specificity:

Tra-2 $\alpha$  (G241) polyclonal antibody detects endogenous levels of Tra-2 $\alpha$  protein.

### DATA:



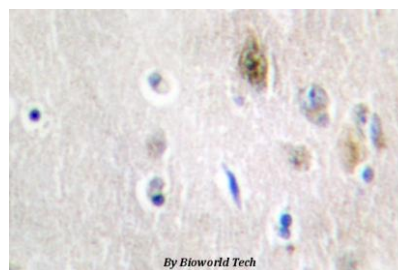
Western blot (WB) analysis of Tra-2 $\alpha$  (G241) pAb at 1:1000 dilution

Lane1:A549 whole cell lysate(20ug)

Lane2:K562 whole cell lysate(20ug)

Lane3:The Kidney tissue lysate of Mouse(40ug)

Lane4:The Kidney tissue lysate of Rat(40ug)



Immunohistochemistry (IHC) analyzes of Tra-2 $\alpha$  (G241) pAb in paraffin-embedded human brain tissue.

### Note:

For research use only, not for use in diagnostic procedure.

### Bioworld Technology, Inc.

Add: 1660 South Highway 100, Suite 500 St. Louis Park, MN 55416, USA.

Email: [info@bioworld.com](mailto:info@bioworld.com)

Tel: 6123263284

Fax: 6122933841

### Bioworld technology, co. Ltd.

Add: No 9, weidi road Qixia District Nanjing, 210046, P. R. China.

Email: [info@biogot.com](mailto:info@biogot.com)

Tel: 0086-025-68037686

Fax: 0086-025-68035151