

Cdc20 (Q105) polyclonal antibody

Catalog: BS2203

Host: Rabbit

Reactivity: Human, Mouse, Rat

BackGround:

Transition from G1 to S phase requires the association of Cdc28 with members of the G1 cyclin family. Exit from mitosis and initiation of the next cell cycle requires a complex of proteins designated the anaphase-promoting complex (APC). This complex consists of two proteins, Cdc16 and Cdc27 (also referred to as Snb1), which are involved in limiting DNA replication to once per cell cycle. Cdc23, another component of the APC, is required for both entering and exiting anaphase, and is important for the proper separation of sister chromatids. The APC is thought to be stabilized by Cdc26 (also known as Scd26). In addition to these APC proteins, Cdc5 is also required for completion of mitosis. In contrast, Cdc20 acts as a DNA-damage induced checkpoint, preventing mitosis when DNA damage has occurred..

Product:

1 mg/ml in Phosphate buffered saline (PBS) with 0.05% sodium azide, approx. pH 7.2.

Molecular Weight:

~ 55 kDa

Swiss-Prot:

Q12834

Purification&Purity:

The antibody was affinity-purified from rabbit antiserum by affinity-chromatography using epitope-specific immunogen and the purity is > 95% (by SDS-PAGE).

Applications:

WB: 1:500~1:1000

IHC: 1:50~1:200

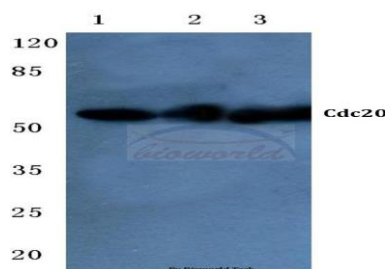
Storage&Stability:

Store at 4 °C short term. Aliquot and store at -20 °C long term. Avoid freeze-thaw cycles.

Specificity:

Cdc20 (Q105) polyclonal antibody detects endogenous levels of Cdc20 protein.

DATA:

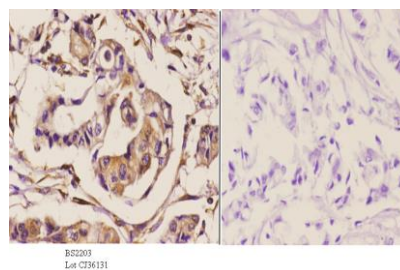


Western blot (WB) analysis of Cdc20 (Q105) polyclonal antibody at 1:500 dilution

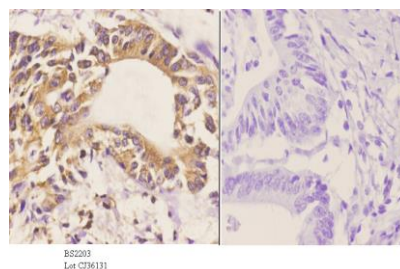
Lane1:Hela cell lysate

Lane2:Raw264.7 cell lysate

Lane3:Rat liver tissue lysate



Immunohistochemistry (IHC) analyzes of Cdc20 (Q105) pAb in paraffin-embedded human breast carcinoma tissue at 1:50. showing cytoplasmic and nucleus staining. Negative control (the right) Using PBS instead of primary antibody, secondary antibody is Goat Anti-Rabbit IgG-biotin followed by avidin-peroxidase.



Immunohistochemistry (IHC) analyzes of Cdc20 (Q105) pAb in paraffin-embedded human colon carcinoma tissue at 1:50. showing cytoplasmic and nucleus staining. Negative control (the right) Using PBS instead of primary antibody, secondary antibody is Goat Anti-Rabbit IgG-biotin

Bioworld Technology, Inc.

Add: 1660 South Highway 100, Suite 500 St. Louis Park, MN 55416, USA.

Email: info@bioworld.com

Tel: 6123263284

Fax: 6122933841

Bioworld technology, co. Ltd.

Add: No 9, weidi road Qixia District Nanjing, 210046, P. R. China.

Email: info@biogot.com

Tel: 0086-025-68037686

Fax: 0086-025-68035151



PRODUCT DATA SHEET

Bioworld Technology, Inc.

followed by avidin-peroxidase.

For research use only, not for use in diagnostic procedure.

Note:

Bioworld Technology, Inc.

Add: 1660 South Highway 100, Suite 500 St. Louis Park,
MN 55416, USA.

Email: info@bioworld.com

Tel: 6123263284

Fax: 6122933841

Bioworld technology, co. Ltd.

Add: No 9, weidi road Qixia District Nanjing, 210046,
P. R. China.

Email: info@biogot.com

Tel: 0086-025-68037686

Fax: 0086-025-68035151