

## Cofilin1/2 (T88) polyclonal antibody

Catalog: BS2183

Host: Rabbit

Reactivity: Human, Mouse, Rat

### BackGround:

Cofilin is ubiquitously expressed in eukaryotic cells where it binds to Actin, thereby regulating the rapid cycling of Actin assembly and disassembly essential for cellular viability. Cofilin is a low molecular weight protein that binds to filamentous F-Actin by bridging two longitudinally associated Actin subunits changing the F-Actin filament twist. This process is allowed by the dephosphorylation of Cofilin Ser 3 by factors such as opsonized zymosan. Lim kinase 1, a serine kinase, phosphorylates Cofilin and renders it unable to bind and depolymerise F-Actin.

### Product:

1 mg/ml in Phosphate buffered saline (PBS) with 0.05% sodium azide, approx. pH 7.2.

### Molecular Weight:

~ 19 kDa

### Swiss-Prot:

Q9Y281/P23528

### Purification&Purity:

The antibody was affinity-purified from rabbit antiserum by affinity-chromatography using epitope-specific immunogen and the purity is > 95% (by SDS-PAGE).

### Applications:

WB: 1:500~1:1000

IF: 1:50~1:200

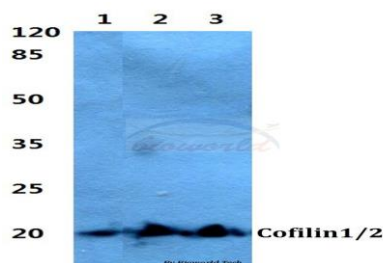
### Storage&Stability:

Store at 4 °C short term. Aliquot and store at -20 °C long term. Avoid freeze-thaw cycles.

### Specificity:

Cofilin1/2 (T88) polyclonal antibody detects endogenous levels of Cofilin1/2 protein.

### DATA:



Western blot (WB) analysis of Cofilin1/2 (T88) polyclonal antibody at 1:500 dilution

Lane1: A549 cell lysate

Lane2: Mouse heart tissue lysate

Lane3: Rat heart tissue lysate

### Note:

For research use only, not for use in diagnostic procedure.

### Bioworld Technology, Inc.

Add: 1660 South Highway 100, Suite 500 St. Louis Park, MN 55416, USA.

Email: [info@bioworld.com](mailto:info@bioworld.com)

Tel: 6123263284

Fax: 6122933841

### Bioworld technology, co. Ltd.

Add: No 9, weidi road Qixia District Nanjing, 210046, P. R. China.

Email: [info@biogol.com](mailto:info@biogol.com)

Tel: 0086-025-68037686

Fax: 0086-025-68035151