

## MSY2 (G311) polyclonal antibody

Catalog: BS2169

Host: Rabbit

Reactivity: Human, Mouse, Rat

### BackGround:

Contrin (MSY2 in mouse) and YB-2 (MSY3/4 in mouse) belong to the Y-box family of multifunctional proteins that regulate both transcription and translation. Y-box proteins interact with a wide variety of nucleic acid structures to act as transcription factors and mRNA masking proteins. The modular structure of Y-box proteins includes a highly conserved N-terminal cold-shock domain (CSD, equivalent to the bacterial cold-shock proteins) and four basic C-terminal domains containing arginine clusters and aromatic residues. MSY2 (Contrin) is expressed in testis and ovary, where it may repress translation of parental mRNA. The gene encoding human Contrin maps to chromosome 17p11.2-13.1. MSY3/4 (YB-2) is also known as DNA binding protein A and is highly expressed in testis, heart and muscle. Contrin and YB-2 bind to the consensus sequence 5'-UCCAUCA-3' contained in the Y-box element.

### Product:

1 mg/ml in Phosphate buffered saline (PBS) with 0.05% sodium azide, approx. pH 7.2.

### Molecular Weight:

~ 38 kDa

### Swiss-Prot:

Q9Y2T7

### Purification&Purity:

The antibody was affinity-purified from rabbit antiserum by affinity-chromatography using epitope-specific immunogen and the purity is > 95% (by SDS-PAGE).

### Applications:

IHC: 1:50~1:200

IF: 1:50~1:200

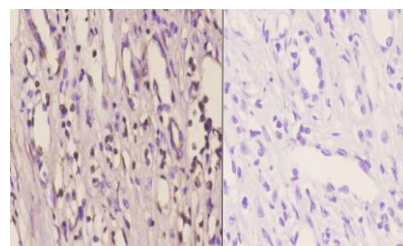
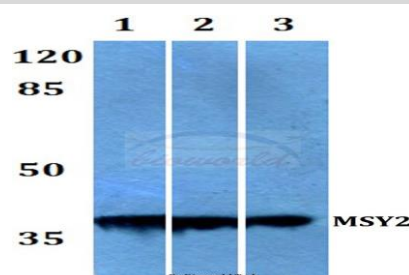
### Storage&Stability:

Store at 4 °C short term. Aliquot and store at -20 °C long term. Avoid freeze-thaw cycles.

### Specificity:

MSY2 (G311) polyclonal antibody detects endogenous levels of MSY2 protein.

### DATA:



BS2169  
Lot C236131

Immunohistochemistry (IHC) analyzes of MSY2 (G311) pAb in paraffin-embedded human kidney carcinoma tissue at 1:50, showing cytoplasmic and nucleus staining. Negative control (the right) Using PBS instead of primary antibody, secondary antibody is Goat Anti-Rabbit IgG-biotin followed by avidin-peroxidase.

### Note:

For research use only, not for use in diagnostic procedure.

### Bioworld Technology, Inc.

Add: 1660 South Highway 100, Suite 500 St. Louis Park, MN 55416, USA.

Email: [info@bioworld.com](mailto:info@bioworld.com)

Tel: 6123263284

Fax: 6122933841

### Bioworld technology, co. Ltd.

Add: No 9, weidi road Qixia District Nanjing, 210046, P. R. China.

Email: [info@biogot.com](mailto:info@biogot.com)

Tel: 0086-025-68037686

Fax: 0086-025-68035151