

## Mnk1 (I136) polyclonal antibody

Catalog: BS2133

Host: Rabbit

Reactivity: Human, Mouse, Rat

### BackGround:

The MAPKAP kinases (for MAP kinase activated protein kinases) are a group of MAP kinase substrates which are themselves kinases. In response to activation, the MAP kinases phosphorylate downstream components on a consensus Pro-X-Ser/Thr-Pro motif. Several kinases that contain this motif have been identified and serve as substrates for the ERK and p38 MAP kinases. These include the serine/threonine kinases Rsk-1 (also designated MAPKAP kinase-1), Rsk-2 and Rsk-3, which are phosphorylated by ERK1 and ERK2. Similarly p38 phosphorylates and activates the serine/threonine kinases MAPKAP kinase-2 and MAPKAP kinase-3 (also designated 3pK). The serine/threonine kinases Mnk1 and Mnk2 are substrates for both ERK and p38 MAP kinases.

### Product:

Rabbit IgG, 1mg/ml in PBS with 0.02% sodium azide, 50% glycerol, pH7.2

### Molecular Weight:

~ 51 kDa

### Swiss-Prot:

Q9BUB5

### Purification&Purity:

The antibody was affinity-purified from rabbit antiserum by affinity-chromatography using epitope-specific im-

munogen and the purity is > 95% (by SDS-PAGE).

### Applications:

IHC: 1:50~1:200

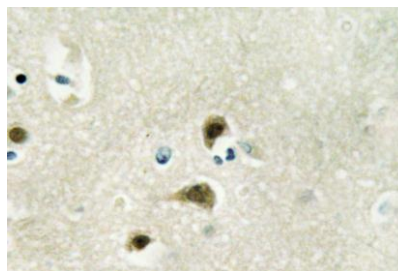
### Storage&Stability:

Store at 4 °C short term. Aliquot and store at -20 °C long term. Avoid freeze-thaw cycles.

### Specificity:

Mnk1 (I136) polyclonal antibody detects endogenous levels of Mnk1 protein.

### DATA:



Immunohistochemistry (IHC) analyzes of Mnk1 (I136) pAb in brain tissue of human

### Note:

For research use only, not for use in diagnostic procedure.

### Bioworld Technology, Inc.

Add: 1660 South Highway 100, Suite 500 St. Louis Park, MN 55416, USA.

Email: [info@bioworld.com](mailto:info@bioworld.com)

Tel: 6123263284

Fax: 6122933841

### Bioworld technology, co. Ltd.

Add: No 9, weidi road Qixia District Nanjing, 210046, P. R. China.

Email: [info@biogot.com](mailto:info@biogot.com)

Tel: 0086-025-68037686

Fax: 0086-025-68035151