

ENX-2 (E192) polyclonal antibody

Catalog: BS2114

Host: Rabbit

Reactivity: Human, Mouse, Rat

BackGround:

In *Drosophila*, the Polycomb (PcG) gene family encodes chromatin proteins that are required for the repression of homeotic loci in embryonic development. PcG proteins work in conjunction with the trithorax-group (trxG) proteins, which activate homeobox gene expression during embryonic development. ENX-1, a mammalian homolog of the *Drosophila* gene enhancer of zeste, is a PcG protein that is ubiquitously expressed during early embryogenesis and becomes restricted to the central and peripheral nervous systems and sites of fetal hematopoiesis during later development. In the adult, ENX-1 is restricted to specific sites, including spleen, testis and placenta. ENX-2 is another mammalian homolog of the *Drosophila* gene enhancer of zeste and contains one SET domain. The gene for human ENX-2 maps to chromosome 17q21. ENX-2 expression is ubiquitous in adult and fetal tissue, where it may aid in maintaining heterochromatin stability.

Product:

1 mg/ml in Phosphate buffered saline (PBS) with 0.05% sodium azide, approx. pH 7.2.

Molecular Weight:

~ 85 kDa

Swiss-Prot:

Q92800

Purification&Purity:

The antibody was affinity-purified from rabbit antiserum by affinity-chromatography using epitope-specific immunogen and the purity is > 95% (by SDS-PAGE).

Applications:

WB: 1:500~1:1000

IHC: 1:50~1:200

IF: 1:50~1:200

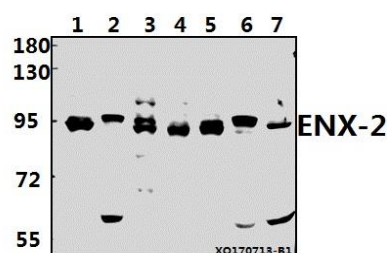
Storage&Stability:

Store at 4 °C short term. Aliquot and store at -20 °C long term. Avoid freeze-thaw cycles.

Specificity:

ENX-2 (E192) polyclonal antibody detects endogenous levels of ENX-2 protein.

DATA:



Western blot (WB) analysis of ENX-2 (E192) polyclonal antibody at 1:500 dilution

Lane1:MCF-7 whole cell lysate(40ug)

Lane2:A2780 whole cell lysate(40ug)

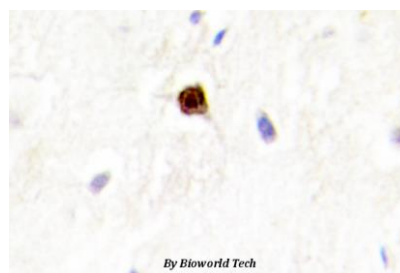
Lane3:HEK293T whole cell lysate(40ug)

Lane4:A549 whole cell lysate(40ug)

Lane5:HepG2 whole cell lysate(40ug)

Lane6:H9C2 whole cell lysate(40ug)

Lane7:3T3-L1 whole cell lysate(40ug)



Immunohistochemistry (IHC) analyzes of ENX-2 (E192) pAb in paraffin-embedded human brain tissue.

Note:

For research use only, not for use in diagnostic procedure.

Bioworld Technology, Inc.

Add: 1660 South Highway 100, Suite 500 St. Louis Park, MN 55416, USA.

Email: info@bioworld.com

Tel: 6123263284

Fax: 6122933841

Bioworld technology, co. Ltd.

Add: No 9, weidi road Qixia District Nanjing, 210046, P. R. China.

Email: info@biogot.com

Tel: 0086-025-68037686

Fax: 0086-025-68035151



PRODUCT DATA SHEET

Bioworld Technology, Inc.

Bioworld Technology, Inc.

Add: 1660 South Highway 100, Suite 500 St. Louis Park,
MN 55416, USA.

Email: info@bioworld.com

Tel: 6123263284

Fax: 6122933841

Bioworld technology, co. Ltd.

Add: No 9, weidi road Qixia District Nanjing, 210046,
P. R. China.

Email: info@biogot.com

Tel: 0086-025-68037686

Fax: 0086-025-68035151