

## Treacle (Q55) polyclonal antibody

Catalog: BS2047

Host: Rabbit

Reactivity: Human, Mouse, Rat

### BackGround:

Treacle is a serine/alanine-rich 1,411 amino acid nuclear phosphoprotein that interacts with upstream binding factor (UBF) and affects transcription of the ribosomal DNA gene. Treacle is also involved in early embryonic development, particularly in the craniofacial complex, and may play a role in nucleolarcytoplasmic transport. The Treacle protein contains three domains with unique N- and C-termini and a large central repeat domain. Mutations in TCOF1, the gene that encodes for Treacle, cause Treacher Collins-Franceschetti syndrome (TCS), a disorder characterized by defects in craniofacial development. Symptoms of TCS include conductive hearing loss, hypoplasia of the mandible and maxilla, downward sloping palpebral fissures and cleft palate.

### Product:

1 mg/ml in Phosphate buffered saline (PBS) with 0.05% sodium azide, approx. pH 7.2.

### Molecular Weight:

~ 152 kDa

### Swiss-Prot:

Q13428

### Purification&Purity:

The antibody was affinity-purified from rabbit antiserum by affinity-chromatography using epitope-specific immunogen and the purity is > 95% (by SDS-PAGE).

### Applications:

WB: 1:500~1:1000

IHC: 1:50~1:200

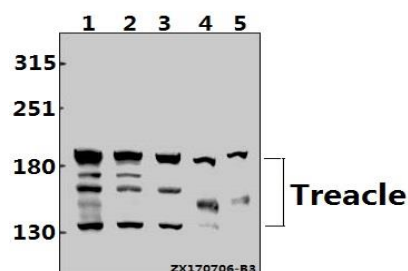
### Storage&Stability:

Store at 4 °C short term. Aliquot and store at -20 °C long term. Avoid freeze-thaw cycles.

### Specificity:

Treacle (Q55) polyclonal antibody detects endogenous levels of Treacle protein.

### DATA:



Western blot (WB) analysis of Treacle (Q55) pAb at 1:500 dilution

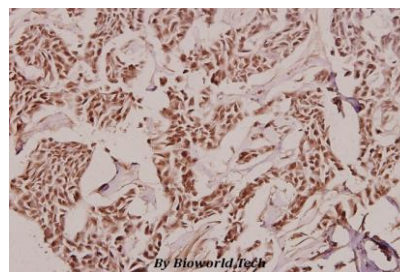
Lane1:HEK293T whole cell lysate(40ug)

Lane2:PC3 whole cell lysate(40ug)

Lane3:A549 whole cell lysate(40ug)

Lane4:PC12 whole cell lysate(40ug)

Lane5:AML-12 whole cell lysate(40ug)



Immunohistochemistry (IHC) analyzes of Treacle (Q55) pAb in paraffin-embedded human breast carcinoma tissue at 1:100.

### Note:

For research use only, not for use in diagnostic procedure.

### Bioworld Technology, Inc.

Add: 1660 South Highway 100, Suite 500 St. Louis Park, MN 55416, USA.

Email: [info@bioworld.com](mailto:info@bioworld.com)

Tel: 6123263284

Fax: 6122933841

### Bioworld technology, co. Ltd.

Add: No 9, weidi road Qixia District Nanjing, 210046, P. R. China.

Email: [info@biogot.com](mailto:info@biogot.com)

Tel: 0086-025-68037686

Fax: 0086-025-68035151