

TEF (K224) polyclonal antibody

Catalog: BS2041

Host: Rabbit

Reactivity: Human, Mouse, Rat

BackGround:

TEF (thyrotrophic embryonic factor), also known as KIAA1655, is a 303 amino acid nuclear transcription factor that belongs to the bZIP (basic region/leucine zipper) family and PAR (proline and acidic amino acid-rich) sub-family. TEF binds DNA as either a homodimer or heterodimer, and is known to transactivate the TSH β promoter. While broadly expressed in adults, TEF is only found in developing embryonic anterior pituitary gland. TEF accumulates according to a robust circadian rhythm and has also been found to inhibit cell growth by downregulating β chain expression of cytokine receptors. The functional domains of TEF are highly homologous with other members of the PAR-bZIP subfamily, including albumin D box-binding protein (DABP), human hepatic leukemia factor (HLF) and chicken vitellogenin gene-binding protein (VBP).

Product:

1 mg/ml in Phosphate buffered saline (PBS) with 0.05% sodium azide, approx. pH 7.2.

Molecular Weight:

~ 33 kDa

Swiss-Prot:

Q10587

Purification&Purity:

The antibody was affinity-purified from rabbit antiserum by affinity-chromatography using epitope-specific immunogen and the purity is > 95% (by SDS-PAGE).

Applications:

IHC: 1:50~1:200

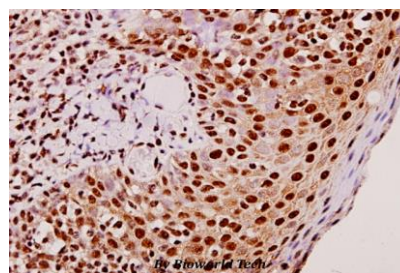
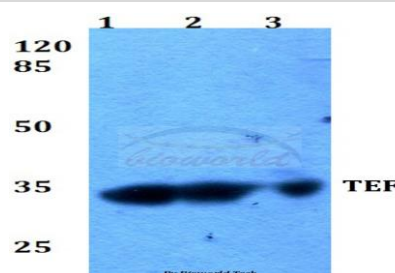
Storage&Stability:

Store at 4 °C short term. Aliquot and store at -20 °C long term. Avoid freeze-thaw cycles.

Specificity:

TEF (K224) polyclonal antibody detects endogenous levels of TEF protein.

DATA:



Immunohistochemistry (IHC) analyzes of TEF (K224) pAb in paraffin-embedded human tonsil carcinoma tissue at 1:50.

Note:

For research use only, not for use in diagnostic procedure.

Bioworld Technology, Inc.

Add: 1660 South Highway 100, Suite 500 St. Louis Park, MN 55416, USA.

Email: info@bioworld.com

Tel: 6123263284

Fax: 6122933841

Bioworld technology, co. Ltd.

Add: No 9, weidi road Qixia District Nanjing, 210046, P. R. China.

Email: info@biogot.com

Tel: 0086-025-68037686

Fax: 0086-025-68035151