

LT-β (V211) polyclonal antibody

Catalog: BS2038

Host: Rabbit

Reactivity: Human, Mouse, Rat

BackGround:

Tumor necrosis factor (TNF) and lymphotoxin-α (LT-α, also known as TNF-β) are members of a family of secreted and cell surface cytokines that participate in the regulation of immune and inflammatory responses. LT-β (lymphotaxin-beta or tumor necrosis factor C) is a type II membrane protein with significant homology to TNF, LT-α, and the ligand for the CD40 receptor. LT-α is present on the surface of activated T, B, and LAK cells as a complex with the 33 kDa glycoprotein, LT-β. LT-β, also expressed by active lymphocytes, forms a heterotrimer with LT-α on the cell surface and anchors LT-α to the cell surface. A TNF receptor-related protein, the LT-β receptor (also known as TNFC receptor), is the human receptor for the LT-α/LT-β heterotrimer. There are two LT-β isoforms expressed in human lymphoid cell lines and non-Hodgkin's lymphomas. The gene which encodes LT-β maps to the major histocompatibility complex region on human chromosome 6p21.3.

Product:

1 mg/ml in Phosphate buffered saline (PBS) with 0.05% sodium azide, approx. pH 7.2.

Molecular Weight:

~ 25 kDa

Swiss-Prot:

Q06643

Purification&Purity:

The antibody was affinity-purified from rabbit antiserum by affinity-chromatography using epitope-specific immunogen and the purity is > 95% (by SDS-PAGE).

Applications:

WB: 1:500~1:1000

IHC: 1:50~1:200

IF: 1:50~1:200

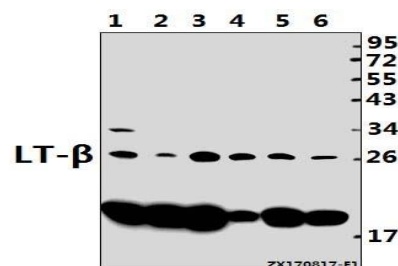
Storage&Stability:

Store at 4 °C short term. Aliquot and store at -20 °C long term. Avoid freeze-thaw cycles.

Specificity:

LT-β (V211) polyclonal antibody detects endogenous levels of LT-β protein.

DATA:



Western blot (WB) analysis of LT-β (V211) pAb at 1:500 dilution

Lane1:H9C2 whole cell lysate(40ug)

Lane2:MEF whole cell lysate(40ug)

Lane3:HeLa whole cell lysate(40ug)

Lane4:HEK293T whole cell lysate(40ug)

Lane5:HepG2 whole cell lysate(40ug)

Lane6:A549 whole cell lysate(40ug)

Note:

For research use only, not for use in diagnostic procedure.

Bioworld Technology, Inc.

Add: 1660 South Highway 100, Suite 500 St. Louis Park, MN 55416, USA.

Email: info@bioworld.com

Tel: 6123263284

Fax: 6122933841

Bioworld technology, co. Ltd.

Add: No 9, weidi road Qixia District Nanjing, 210046, P. R. China.

Email: info@biogot.com

Tel: 0086-025-68037686

Fax: 0086-025-68035151