

CRSP70 (S7) polyclonal antibody

Catalog: BS1902

Host: Rabbit

Reactivity: Human, Mouse, Rat

BackGround:

These complexes include CRSP (for cofactor required for Sp1 activation), which is required, in conjunction with TAFIIs, for transcriptional activation by Sp1. CRSP is ubiquitously expressed in various tissues and functions as a multimeric complex that consists of nine distinct subunits. Several members of the CRSP family share sequence similarity with multiple components of the yeast transcriptional mediator proteins, including CRSP150, which is related to yeast Rgr1, and CRSP70, which is similar to the elongation factor TFIIS. CRSP77 and CRSP150 are also related to proteins within the putative murine mediator complex, while CRSP130 and CRSP34 are largely unrelated to either murine or yeast proteins.

Product:

1 mg/ml in Phosphate buffered saline (PBS) with 0.05% sodium azide, approx. pH 7.2.

Molecular Weight:

~ 65 kDa

Swiss-Prot:

O95402

Purification&Purity:

The antibody was affinity-purified from rabbit antiserum by affinity-chromatography using epitope-specific immunogen and the purity is > 95% (by SDS-PAGE).

Applications:

WB: 1:500~1:1000

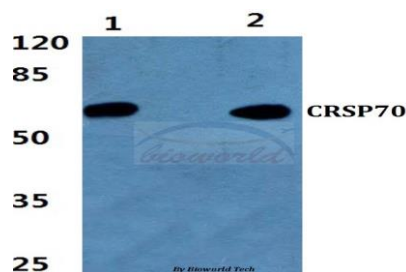
Storage&Stability:

Store at 4 °C short term. Aliquot and store at -20 °C long term. Avoid freeze-thaw cycles.

Specificity:

CRSP70 (S7) polyclonal antibody detects endogenous levels of CRSP70 protein.

DATA:



Western blot (WB) analysis of CRSP70 (S7) polyclonal antibody at 1:500 dilution

Lane1:A549 cell lysate

Lane2:PC12 cell lysate

Note:

For research use only, not for use in diagnostic procedure.

Bioworld Technology, Inc.

Add: 1660 South Highway 100, Suite 500 St. Louis Park, MN 55416, USA.

Email: info@bioworld.com

Tel: 6123263284

Fax: 6122933841

Bioworld technology, co. Ltd.

Add: No 9, weidi road Qixia District Nanjing, 210046, P. R. China.

Email: info@biogol.com

Tel: 0086-025-68037686

Fax: 0086-025-68035151