

Vimentin (L79) polyclonal antibody

Catalog: BS1855

Host: Rabbit

Reactivity: Human, Mouse, Rat

BackGround:

Cytoskeletal intermediate filaments (IFs) constitute a diverse group of proteins that are expressed in a highly tissue-specific manner. Intermediate filaments are constructed from two-chain, α -helical, coiled-coil molecules arranged on an imperfect helical lattice and have been widely used as markers for distinguishing individual cell types within a tissue and identifying the origins of metastatic tumors. One such intermediate filament protein, Vimentin, is a general marker of cells originating in the mesenchyme. Vimentin is frequently coexpressed with other members of the intermediate filament family, such as the cytokeratins, in neoplasms including melanoma and breast carcinoma.

Product:

Rabbit IgG, 1mg/ml in PBS with 0.02% sodium azide, 50% glycerol, pH7.2

Molecular Weight:

~ 57 kDa

Swiss-Prot:

P08670

Purification&Purity:

The antibody was affinity-purified from rabbit antiserum by affinity-chromatography using epitope-specific immunogen and the purity is > 95% (by SDS-PAGE).

Applications:

WB: 1:500~1:1000

IHC: 1:50~1:200

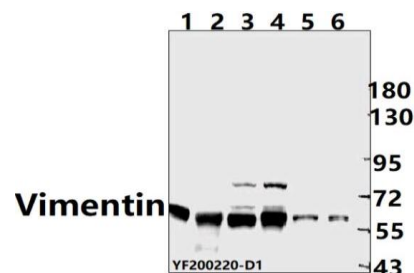
Storage&Stability:

Store at 4 °C short term. Aliquot and store at -20 °C long term. Avoid freeze-thaw cycles.

Specificity:

Vimentin (L79) polyclonal antibody detects endogenous levels of Vimentin protein.

DATA:



Western blot (WB) analysis of Vimentin (L79) pAb at 1:1000 dilution

Lane1:The testis tissue lysate of Rat(40ug)

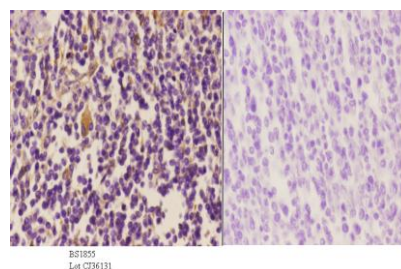
Lane2:The kidney tissue lysate of Mouse(40ug)

Lane3:HEK293T whole cell lysate(40ug)

Lane4:K562 whole cell lysate(40ug)

Lane5:Jurkat whole cell lysate (40ug)

Lane6:PC3 whole cell lysate (40ug)



Immunohistochemistry (IHC) analyzes of Vimentin (L79) pAb in paraffin-embedded human tonsil carcinoma tissue at 1:50, showing cytoplasmic and cell membrane staining. Negative control (the right) Using PBS instead of primary antibody, secondary antibody is Goat Anti-Rabbit IgG-biotin followed by avidin-peroxidase.

Note:

For research use only, not for use in diagnostic procedure.

Bioworld Technology, Inc.

Add: 1660 South Highway 100, Suite 500 St. Louis Park, MN 55416, USA.

Email: info@bioworld.com

Tel: 6123263284

Fax: 6122933841

Bioworld technology, co. Ltd.

Add: No 9, weidi road Qixia District Nanjing, 210046, P. R. China.

Email: info@biogot.com

Tel: 0086-025-68037686

Fax: 0086-025-68035151