

PEA-15 (D110) polyclonal antibody

Catalog: BS1573

Host: Rabbit

Reactivity: Human, Mouse, Rat

BackGround:

PEA-15 (phosphoprotein enriched in astrocytes) exists in an non-phosphorylated form (N), and two phosphorylated forms, Pa and Pb. PEA-15 is an endogenous substrate for PKC, which mediates the transition from Pa to Pb. The level of PEA-15 phosphorylation changes upon depolymerization or stabilization of tubulins, indicating that PEA-15 co-localizes with microtubules. The first 80 amino acids of PEA-15 correspond to the death effector domain (DED), which is a domain found in proteins that regulate apoptotic signaling pathways. The DED domain is necessary for PEA-15 to block Ras suppression. Although PEA-15 is predominantly expressed in the central nervous system, low levels of PEA-15 are expressed in liver and kidney, and higher levels in muscle. PEA-15 is also referred to as PED, phosphoprotein enriched in diabetes, for its elevated expression in type 2 diabetic patients

Product:

1 mg/ml in Phosphate buffered saline (PBS) with 0.05% sodium azide, approx. pH 7.2.

Molecular Weight:

~ 36 kDa

Swiss-Prot:

Q15121

Purification&Purity:

The antibody was affinity-purified from rabbit antiserum by affinity-chromatography using epitope-specific immunogen and the purity is > 95% (by SDS-PAGE).

Applications:

WB: 1:500~1:1000

IHC: 1:50~1:200

IF: 1:50~1:200

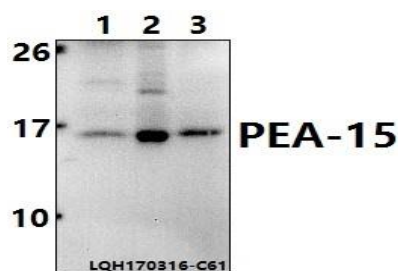
Storage&Stability:

Store at 4 °C short term. Aliquot and store at -20 °C long term. Avoid freeze-thaw cycles.

Specificity:

PEA-15 (D110) polyclonal antibody detects endogenous levels of PEA-15 protein.

DATA:

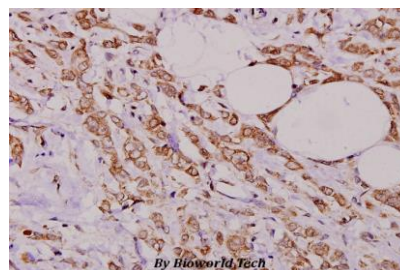


Western blot (WB) analysis of PEA-15 (D110) polyclonal antibody at 1:500 dilution

Lane1: NIH-3T3 whole cell lysate(40ug)

Lane2: HEK293T whole cell lysate(40ug)

Lane3: C6 whole cell lysate(40ug)



Immunohistochemistry (IHC) analyzes of PEA-15 (D110) pAb in paraffin-embedded human breast carcinoma tissue at 1:100.

Note:

For research use only, not for use in diagnostic procedure.

Bioworld Technology, Inc.

Add: 1660 South Highway 100, Suite 500 St. Louis Park, MN 55416, USA.

Email: info@bioworld.com

Tel: 6123263284

Fax: 6122933841

Bioworld technology, co. Ltd.

Add: No 9, weidi road Qixia District Nanjing, 210046, P. R. China.

Email: info@biogot.com

Tel: 0086-025-68037686

Fax: 0086-025-68035151