

SEN1 (D2) polyclonal antibody

Catalog: BS1469

Host: Rabbit

Reactivity: Human, Mouse, Rat

BackGround:

SUMO (small ubiquitin-related modifier), a member of the ubiquitin-like protein family, regulates diverse cellular functions of a variety of target proteins including transcription, DNA repair, nucleocytoplasmic trafficking and chromosome segregation. SUMO precursor proteins undergo cleavage of the residues after the "GG" region by SUMO-specific proteases in maturation. This cleavage of the precursor is a prerequisite for subsequent sumoylation. The sentrin-specific (or SUMO-specific) protease (SEN1) proteins belong to the peptidase C48 family and include SEN1-3 and SEN5-8. SEN1, SEN2 and SEN3 degrade UBL1 and SMT3H2 conjugates and subsequently release the monomers from sumoylated substrates.

Product:

1 mg/ml in Phosphate buffered saline (PBS) with 0.05% sodium azide, approx. pH 7.2.

Molecular Weight:

~ 73 kDa

Swiss-Prot:

Q9P0U3

Purification&Purity:

The antibody was affinity-purified from rabbit antiserum by affinity-chromatography using epitope-specific immunogen and the purity is > 95% (by SDS-PAGE).

Applications:

WB: 1:500~1:1000

IHC: 1:50~1:200

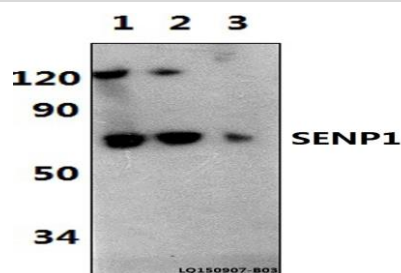
Storage&Stability:

Store at 4 °C short term. Aliquot and store at -20 °C long term. Avoid freeze-thaw cycles.

Specificity:

SEN1 (D2) polyclonal antibody detects endogenous levels of SEN1 protein.

DATA:

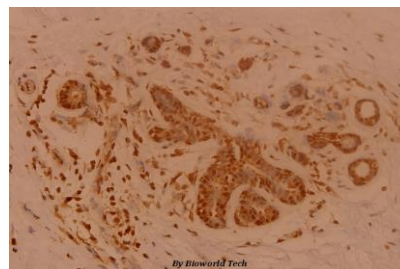


Western blot (WB) analysis of SEN1 (D2) polyclonal antibody at 1:500 dilution

Lane1:Hela whole cell lysate(40ug)

Lane2:The Testis cells tissue lysate of Rat(40ug)

Lane3:The Testis cells tissue lysate of Mouse(40ug)



Immunohistochemistry (IHC) analyzes of SEN1 (D2) pAb in paraffin-embedded human breast carcinoma tissue at 1:100.

Note:

For research use only, not for use in diagnostic procedure.

Bioworld Technology, Inc.

Add: 1660 South Highway 100, Suite 500 St. Louis Park, MN 55416, USA.

Email: info@bioworld.com

Tel: 6123263284

Fax: 6122933841

Bioworld technology, co. Ltd.

Add: No 9, weidi road Qixia District Nanjing, 210046, P. R. China.

Email: info@biogot.com

Tel: 0086-025-68037686

Fax: 0086-025-68035151