

Ki-67 (V3242) polyclonal antibody

Catalog: BS1454

Host: Rabbit

Reactivity: Human

BackGround:

Ki-67 is a nuclear protein that is expressed in proliferating cells and may be required for maintaining cell proliferation. Ki-67 has been used as a marker for cell proliferation of solid tumors and some hematological malignancies. A correlation has been demonstrated between Ki-67 index and the histopathological grade of neoplasms. Assessment of Ki-67 expression in renal and ureter tumors shows a correlation between tumor proliferation and disease progression, thus making it possible to differentiate high-risk patients. Ki-67 expression may also prove to be important for distinguishing between malignant and benign peripheral nerve sheath tumors

Product:

1 mg/ml in Phosphate buffered saline (PBS) with 0.05% sodium azide, approx. pH 7.2.

Molecular Weight:

~ 359 kDa

Swiss-Prot:

P46013

Purification&Purity:

The antibody was affinity-purified from rabbit antiserum by affinity-chromatography using epitope-specific immunogen and the purity is > 95% (by SDS-PAGE).

Applications:

WB: 1:500~1:1000

IHC: 1:50~1:200

IF: 1:50~1:200

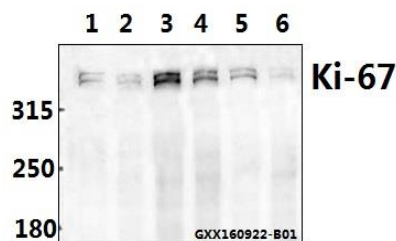
Storage&Stability:

Store at 4 °C short term. Aliquot and store at -20 °C long term. Avoid freeze-thaw cycles.

Specificity:

Ki-67 (V3242) polyclonal antibody detects endogenous levels of Ki-67 protein.

DATA:



Western blot (WB) analysis of Ki-67 (V3242) pAb at 1:500 dilution

Lane1:HCT116 whole cell lysate(40ug)

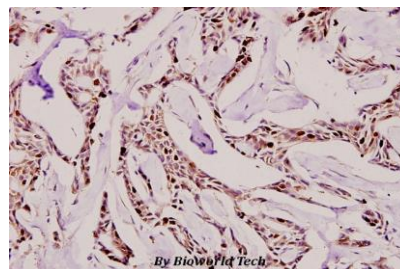
Lane2:U-87MG whole cell lysate(40ug)

Lane3:HepG2 whole cell lysate(40ug)

Lane4:L02 whole cell lysate(40ug)

Lane5:SK-OVCAR3 whole cell lysate(40ug)

Lane6:DLD whole cell lysate(40ug)



Immunohistochemistry (IHC) analyzes of Ki-67 (V3242) pAb in paraffin-embedded human breast carcinoma tissue at 1:100.

Note:

For research use only, not for use in diagnostic procedure.

Bioworld Technology, Inc.

Add: 1660 South Highway 100, Suite 500 St. Louis Park, MN 55416, USA.

Email: info@bioworld.com

Tel: 6123263284

Fax: 6122933841

Bioworld technology, co. Ltd.

Add: No 9, weidi road Qixia District Nanjing, 210046, P. R. China.

Email: info@biogot.com

Tel: 0086-025-68037686

Fax: 0086-025-68035151