

Na⁺/K⁺-ATPase α 1 (Y10) polyclonal antibody

Catalog: BS1436

Host: Rabbit

Reactivity: Human

BackGround:

The sodium/potassium ATPase is an integral membrane enzyme found in all cells of higher organisms and is responsible for the ATP dependent transport of sodium and potassium across the cell membrane. This membrane bound enzyme is related to a number of other ATPases including sarcoplasmic and endoplasmic reticulum calcium ATPase (SERCA) and plasma membrane calcium ATPase (PMCA). The sodium / potassium ATPase consists of a large, multipass, transmembrane catalytic subunit, termed the alpha subunit, and an associated smaller glycoprotein, termed the beta subunit. Studies indicate that there are three isoforms of the alpha subunit (alpha 1, alpha 2, alpha 3) and two isoforms of the beta subunit (beta 1 and beta 2) encoded by two multigene families. The different isoforms of the sodium / potassium ATPase exhibit tissue specific and developmental patterns of expression. The alpha 1 and beta mRNAs are present in all cell types examined, whereas the alpha 2 and alpha 3 mRNAs exhibit a more restricted pattern of cell specific expression. The alpha subunit has been found in kidney, brain, heart, and to a lesser extent liver, skeletal and smooth muscle.

Product:

1 mg/ml in Phosphate buffered saline (PBS) with 0.05% sodium azide, approx. pH 7.2.

Molecular Weight:

~ 112 kDa

Swiss-Prot:

P05023

Purification&Purity:

The antibody was affinity-purified from rabbit antiserum by affinity-chromatography using epitope-specific immunogen and the purity is > 95% (by SDS-PAGE).

Applications:

WB: 1:500~1:1000

IHC: 1:50~1:200

IF: 1:50~1:200

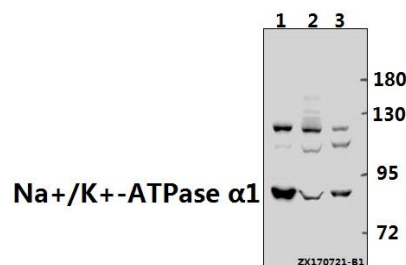
Storage&Stability:

Store at 4 °C short term. Aliquot and store at -20 °C long term. Avoid freeze-thaw cycles.

Specificity:

Na⁺/K⁺-ATPase α 1 (Y10) polyclonal antibody detects endogenous levels of A Na⁺/K⁺-ATPase α 1 protein

DATA:

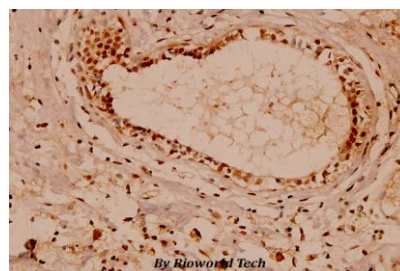


Western blot (WB) analysis of Na⁺/K⁺-ATPase α 1 (Y10) pAb at 1:500 dilution

Lane1:HCT116 whole cell lysate(40ug)

Lane2:HEK293T whole cell lysate(40ug)

Lane3:SGC7901 whole cell lysate(40ug)



Immunohistochemistry (IHC) analyzes of Na⁺/K⁺-ATPase α 1 (Y10) pAb in paraffin-embedded human breast carcinoma tissue at 1:100.

Note:

For research use only, not for use in diagnostic procedure.

Bioworld Technology, Inc.

Add: 1660 South Highway 100, Suite 500 St. Louis Park, MN 55416, USA.

Email: info@bioworld.com

Tel: 6123263284

Fax: 6122933841

Bioworld technology, co. Ltd.

Add: No 9, weidi road Qixia District Nanjing, 210046, P. R. China.

Email: info@biogot.com

Tel: 0086-025-68037686

Fax: 0086-025-68035151



PRODUCT DATA SHEET

Bioworld Technology, Inc.

Bioworld Technology, Inc.

Add: 1660 South Highway 100, Suite 500 St. Louis Park,
MN 55416, USA.

Email: info@bioworld.com

Tel: 6123263284

Fax: 6122933841

Bioworld technology, co. Ltd.

Add: No 9, weidi road Qixia District Nanjing, 210046,
P. R. China.

Email: info@biogot.com

Tel: 0086-025-68037686

Fax: 0086-025-68035151