

Syk (P342) polyclonal antibody

Catalog: BS1428

Host: Rabbit

Reactivity: Human,Rat,Mouse

BackGround:

Syk is a protein tyrosine kinase that plays an important role in intracellular signal transduction in hematopoietic cells. Syk interacts with immunoreceptor tyrosine-based activation motifs (ITAMs) located in the cytoplasmic domains of immune receptors. It couples the activated immunoreceptors to downstream signaling events that mediate diverse cellular responses, including proliferation, differentiation, and phagocytosis. There is also evidence of a role for Syk in nonimmune cells and investigators have indicated that Syk is a potential tumor suppressor in human breast carcinomas. Tyr323 is a negative regulatory phosphorylation site within the SH2-kinase linker region in Syk. Phosphorylation at Tyr323 provides a direct binding site for the TKB domain of Cbl. Tyr352 of Syk is involved in the association of PLC γ 1. Tyr525 and Tyr526 are located in the activation loop of the Syk kinase domain; phosphorylation at Tyr525/526 of human Syk (equivalent to Tyr519/520 of mouse Syk) is essential for Syk function.

Product:

Rabbit IgG, 1mg/ml in PBS with 0.02% sodium azide, 50% glycerol, pH7.2.

Molecular Weight:

~ 80 kDa

Swiss-Prot:

P43405

Purification&Purity:

The antibody was affinity-purified from rabbit antiserum by affinity-chromatography using epitope-specific immunogen and the purity is > 95% (by SDS-PAGE).

Applications:

WB: 1:2000~1:5000

IHC: 1:50~1:200

IF: 1:100~1:500

IP: 1:50~1:200

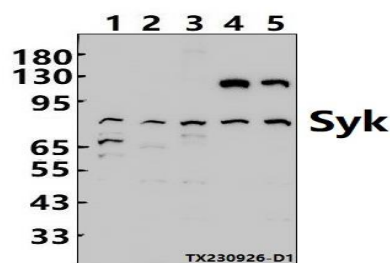
Storage&Stability:

Store at 4 °C short term. Aliquot and store at -20 °C long term. Avoid freeze-thaw cycles.

Specificity:

Syk (P342) polyclonal antibody detects endogenous levels of Syk protein.

DATA:



Western blot (WB) analysis of Syk (P342) polyclonal antibody at 1:2000 dilution

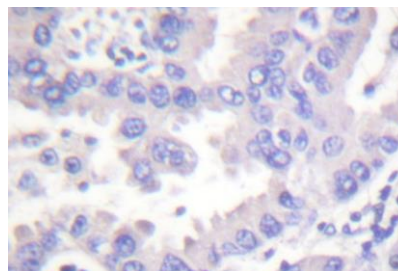
Lane1:A431 whole cell lysate(30ug)

Lane2:HEK293T whole cell lysate(30ug)

Lane3:THP-1 whole cell lysate(30ug)

Lane4:PMVEC whole cell lysate(30ug)

Lane5:CT-26 whole cell lysate(30ug)



Immunohistochemistry (IHC) analyzes of SYK (P342) pAb in paraffin-embedded human breast carcinoma tissue.

Bioworld Technology, Inc.

Add: 1660 South Highway 100, Suite 500 St. Louis Park, MN 55416, USA.

Email: info@bioworld.com

Tel: 6123263284

Fax: 6122933841

Bioworld technology, co. Ltd.

Add: No 9, weidi road Qixia District Nanjing, 210046, P. R. China.

Email: info@biogot.com

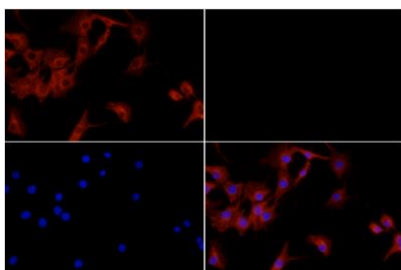
Tel: 0086-025-68037686

Fax: 0086-025-68035151



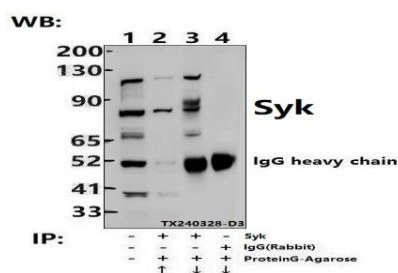
PRODUCT DATA SHEET

Bioworld Technology, Inc.



For research use only, not for use in diagnostic procedure.

Immunofluorescence analysis of PMVEC cells using Syk (P342) pAb at dilution of 1:200 (40x lens).



Immunoprecipitation of PMVEC cell lysates using Syk (P342) pAb (Sepharose Bead Conjugate)#BD0048 (lane 2 and lane 3) and Nonspecific IgG Control (Sepharose Bead Conjugate)#BD0048 (lane 4). Lane 1 is 30% input. The western blot was probed using Syk (P342) pAb.

Note:

Bioworld Technology, Inc.

Add: 1660 South Highway 100, Suite 500 St. Louis Park, MN 55416, USA.

Email: info@bioworld.com

Tel: 6123263284

Fax: 6122933841

Bioworld technology, co. Ltd.

Add: No 9, weidi road Qixia District Nanjing, 210046, P. R. China.

Email: info@biogot.com

Tel: 0086-025-68037686

Fax: 0086-025-68035151