

## PLC $\gamma$ 2 (R747) polyclonal antibody

Catalog: BS1418

Host: Rabbit

Reactivity: Human, Mouse

### BackGround:

Phosphoinositide-specific phospholipase C (PLC) plays a crucial role in the initiation of receptor mediated signal transduction through the generation of the two second messengers, inositol 1,4,5-triphosphate and diacylglycerol from phosphatidylinositol 4,5-bisphosphate. There are many mammalian PLC isozymes, including PLC  $\beta$ 1, PLC  $\beta$ 2, PLC  $\beta$ 3, PLC  $\beta$ 4, PLC $\gamma$ 1, PLC $\gamma$ 2, PLC  $\delta$ 1, PLC  $\delta$ 2 and PLC $\epsilon$ . PLC $\delta$  exists as four different isoforms. PLC  $\delta$ 1, a calcium signal amplifier, is activated by an atypical GTP-binding protein. In addition, PLC  $\delta$ 1 is an effector for GTP-binding protein transglutaminase II-mediated oxytocin receptor and  $\alpha$ 1B-adrenoreceptor signaling. Mouse PLC  $\delta$ 1 is highly expressed in brain, heart, lung and testis.

### Product:

1 mg/ml in Phosphate buffered saline (PBS) with 0.05% sodium azide, approx. pH 7.2.

### Molecular Weight:

~ 148 kDa

### Swiss-Prot:

P16885

### Purification&Purity:

The antibody was affinity-purified from rabbit antiserum by affinity-chromatography using epitope-specific immunogen and the purity is > 95% (by SDS-PAGE).

### Applications:

WB: 1:500~1:1000

IHC: 1:50~1:200

### Storage&Stability:

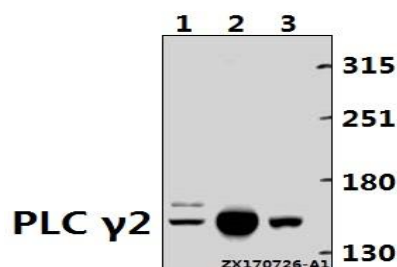
Store at 4 °C short term. Aliquot and store at -20 °C long

term. Avoid freeze-thaw cycles.

### Specificity:

PLC  $\gamma$ 2 (R747) polyclonal antibody detects endogenous levels of PLC  $\gamma$ 2 protein.

### DATA:

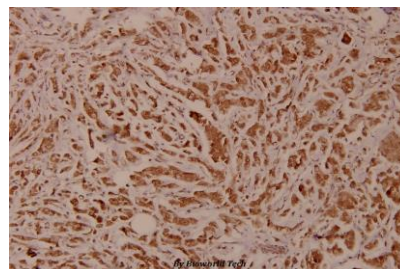


Western blot (WB) analysis of PLC  $\gamma$ 2 (R747) pAb at 1:500 dilution

Lane1:PC3 whole cell lysate(40ug)

Lane2:BV2 whole cell lysate(40ug)

Lane3:Hela whole cell lysate(40ug)



Immunohistochemistry (IHC) analyzes of PLC  $\gamma$ 2 (R747) pAb in paraffin-embedded human breast carcinoma tissue at 1:100.

### Note:

For research use only, not for use in diagnostic procedure.

### Bioworld Technology, Inc.

Add: 1660 South Highway 100, Suite 500 St. Louis Park, MN 55416, USA.

Email: [info@bioworld.com](mailto:info@bioworld.com)

Tel: 6123263284

Fax: 6122933841

### Bioworld technology, co. Ltd.

Add: No 9, weidi road Qixia District Nanjing, 210046, P. R. China.

Email: [info@biogot.com](mailto:info@biogot.com)

Tel: 0086-025-68037686

Fax: 0086-025-68035151