

BACE (D492) polyclonal antibody

Catalog: BS1382

Host: Rabbit

Reactivity: Human, Mouse, Rat

BackGround:

Autosomal dominant Alzheimer's disease is caused by mutations in the gene encoding the β -amyloid protein precursor (APP). Amyloid β -peptide (A β), the major feature of amyloid plaques in Alzheimer's patients, is the product of APP cleavage by β - and γ -secretases. BACE is the transmembrane protease which cleaves A β from APP. BACE and the related protein Asp1 are both widely expressed in human tissue with the highest levels in the pancreas. BACE has a molecular mass of ~70 kDa, larger than predicted due to glycosylation, and is localized within Golgi and endosomes.

Product:

1 mg/ml in Phosphate buffered saline (PBS) with 0.05% sodium azide, approx. pH 7.2.

Molecular Weight:

~ 50 kDa

Swiss-Prot:

P56817

Purification&Purity:

The antibody was affinity-purified from rabbit antiserum by affinity-chromatography using epitope-specific immunogen and the purity is > 95% (by SDS-PAGE).

Applications:

IHC: 1:50~1:200

IF: 1:50~1:200

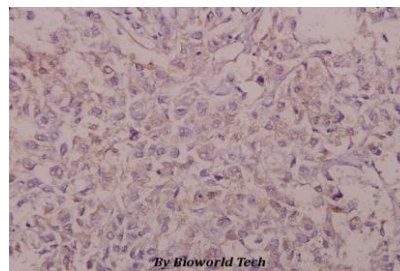
Storage&Stability:

Store at 4 °C short term. Aliquot and store at -20 °C long term. Avoid freeze-thaw cycles.

Specificity:

BACE (D492) polyclonal antibody detects endogenous levels of BACE protein.

DATA:



Immunohistochemistry (IHC) analyzes of BACE (D492) pAb in paraffin-embedded human colorectal carcinoma tissue at 1:50.

Note:

For research use only, not for use in diagnostic procedure.

Bioworld Technology, Inc.

Add: 1660 South Highway 100, Suite 500 St. Louis Park, MN 55416, USA.

Email: info@bioworld.com

Tel: 6123263284

Fax: 6122933841

Bioworld technology, co. Ltd.

Add: No 9, weidi road Qixia District Nanjing, 210046, P. R. China.

Email: info@biogot.com

Tel: 0086-025-68037686

Fax: 0086-025-68035151