

## **THRB (L37) polyclonal antibody**

Catalog: BS1365

Host: Rabbit

Reactivity: Human, Mouse, Rat

### **BackGround:**

Thyroid hormone nuclear receptors (TRs) are ligand-dependent transcription factors which regulate growth, differentiation and development and represent members of the steroid/retinoic acid superfamily. The two genes encoding TRs identified to date, TR $\alpha$  and TR $\beta$ , have been mapped to human chromosomes 17 and 3, respectively. TRs bind to thyroid hormone response elements (TREs) with half-site binding motifs in the orientation of palindromes, direct repeats or inverted palindromes. The affinities of binding are both variable and influenced differentially by 3,5,3'-triiodo-L-thyronine (T3). Transcriptional regulation by TRs is also modulated by heterodimerization with TR nuclear accessory proteins, the most extensively characterized of which are the retinoid X receptors (RXR $\alpha$ , RXR $\beta$  and RXR $\gamma$ ). To a certain extent, this activity is regulated by differential phosphorylation of TRs. Thus, not only are the biological activities of TRs regulated by heterodimerization with RXRs, but in addition, the gene regulatory activities of TRs are linked to other hormonal pathways.

### **Product:**

1 mg/ml in Phosphate buffered saline (PBS) with 0.05% sodium azide, approx. pH 7.2.

### **Molecular Weight:**

~ 52 kDa

### **Swiss-Prot:**

P10828

### **Purification&Purity:**

The antibody was affinity-purified from rabbit antiserum by affinity-chromatography using epitope-specific immunogen and the purity is > 95% (by SDS-PAGE).

### **Applications:**

WB: 1:500~1:1000

IHC: 1:50~1:200

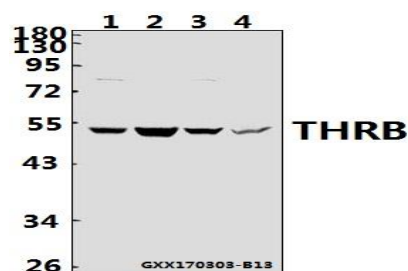
### **Storage&Stability:**

Store at 4 °C short term. Aliquot and store at -20 °C long term. Avoid freeze-thaw cycles.

### **Specificity:**

Thyroid Hormone Receptor  $\beta$  (L37) polyclonal antibody detects endogenous levels of Thyroid Hormone Receptor  $\beta$  protein.

### **DATA:**



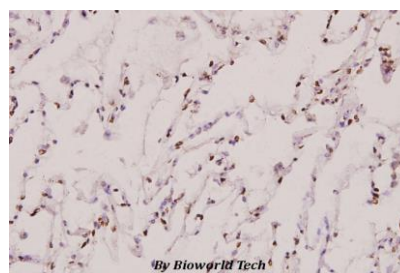
Western blot (WB) analysis of THRB (L37) polyclonal antibody at 1:500 dilution

Lane1: A549 whole cell lysate (40ug)

Lane2: HCT116 whole cell lysate (40ug)

Lane3: BV2 whole cell lysate (40ug)

Lane4: PC12 whole cell lysate (40ug)



Immunohistochemistry (IHC) analyzes of THRB (L37) pAb in paraffin-embedded human lung carcinoma tissue at 1:100.

### **Note:**

For research use only, not for use in diagnostic procedure.

### **Bioworld Technology, Inc.**

Add: 1660 South Highway 100, Suite 500 St. Louis Park, MN 55416, USA.

Email: [info@bioworld.com](mailto:info@bioworld.com)

Tel: 6123263284

Fax: 6122933841

### **Bioworld technology, co. Ltd.**

Add: No 9, weidi road Qixia District Nanjing, 210046, P. R. China.

Email: [info@biogot.com](mailto:info@biogot.com)

Tel: 0086-025-68037686

Fax: 0086-025-68035151



## PRODUCT DATA SHEET

Bioworld Technology, Inc.

---

---

### **Bioworld Technology, Inc.**

Add: 1660 South Highway 100, Suite 500 St. Louis Park,  
MN 55416, USA.

Email: [info@bioworld.com](mailto:info@bioworld.com)

Tel: 6123263284

Fax: 6122933841

### **Bioworld technology, co. Ltd.**

Add: No 9, weidi road Qixia District Nanjing, 210046,  
P. R. China.

Email: [info@biogot.com](mailto:info@biogot.com)

Tel: 0086-025-68037686

Fax: 0086-025-68035151