

## Rit1 (W204) polyclonal antibody

Catalog: BS1317

Host: Rabbit

Reactivity: Human, Mouse, Rat

### BackGround:

ROC 1 and ROC 2 are the two highly conserved RING finger proteins that are homologous to APC 11, a subunit of the anaphase promoting complex (APC). ROC 1 and ROC 2 commonly interact with all cullins while APC 11 specifically interacts with APC 2, a cullin related APC subunit. ROC 1 and APC 11 immunocomplexes can catalyze isopeptide ligations to form polyubiquitin chains in an E1 and E2 dependent manner. ROC 1 is thought to play a unique role in the ubiquitination reaction by heterodimerizing with cullin 1 to catalyze ubiquitin polymerization.

### Product:

1 mg/ml in Phosphate buffered saline (PBS) with 15 mM sodium azide, approx. pH 7.2.

### Molecular Weight:

~ 25 kDa

### Swiss-Prot:

Q92963

### Purification&Purity:

The antibody was affinity-purified from rabbit antiserum by affinity-chromatography using epitope-specific immunogen and the purity is > 95% (by SDS-PAGE).

### Applications:

WB: 1:500~1:1000

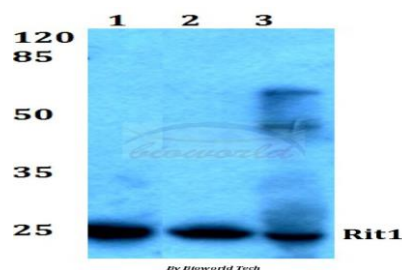
### Storage&Stability:

Store at 4 °C short term. Aliquot and store at -20 °C long term. Avoid freeze-thaw cycles.

### Specificity:

ROC1 (W204) polyclonal antibody detects endogenous levels of ROC1 protein.

### DATA:



Western blot (WB) analysis of Rit1 (W204) polyclonal antibody at 1:500 dilution

Lane1: HEK293T whole cell lysate

Lane2: sp2/0 whole cell lysate

Lane3: H9C2 whole cell lysate

### Note:

For research use only, not for use in diagnostic procedure.

### Bioworld Technology, Inc.

Add: 1660 South Highway 100, Suite 500 St. Louis Park, MN 55416, USA.

Email: [info@bioworld.com](mailto:info@bioworld.com)

Tel: 6123263284

Fax: 6122933841

### Bioworld technology, co. Ltd.

Add: No 9, weidi road Qixia District Nanjing, 210046, P. R. China.

Email: [info@biogol.com](mailto:info@biogol.com)

Tel: 0086-025-68037686

Fax: 0086-025-68035151