

## PLC $\gamma$ 1 (G777) polyclonal antibody

Catalog: BS1295

Host: Rabbit

Reactivity: Human, Mouse, Rat

### BackGround:

Phosphoinositide-specific phospholipase C (PLC) plays a crucial role in the initiation of receptor mediated signal transduction through the generation of the two second messengers, inositol 1,4,5-triphosphate and diacylglycerol from phosphatidylinositol 4,5-bisphosphate. There are many mammalian PLC isozymes, including PLC  $\beta$ 1, PLC  $\beta$ 2, PLC  $\beta$ 3, PLC  $\beta$ 4, PLC  $\gamma$ 1, PLC  $\gamma$ 2, PLC  $\delta$ 1, PLC  $\delta$ 2 and PLC  $\epsilon$ . PLC  $\gamma$ 1 is widely distributed in bronchiolar epithelium, type I and II pneumocytes and fibroblasts of the interstitial tissue. Actinregulatory protein Villin is tyrosine phosphorylated and associates with PLC  $\gamma$ 1 in the brush border of intestinal epithelial cells. Villin regulates PLC  $\gamma$ 1 activity by modifying its own ability to bind phosphatidylinositol 4,5-bisphosphate. PLC  $\gamma$ 1 binds  $\alpha$ 1 $\beta$ 1 Integrin and modulates  $\alpha$ 1 $\beta$ 1 Integrin-specific adhesion. PLC  $\gamma$ 1 and Ca<sup>2+</sup> play a direct role in VEGF-regulated endothelial growth, however this signaling pathway is not linked to FGF-mediated effects in primary endothelial cells.

### Product:

1 mg/ml in Phosphate buffered saline (PBS) with 0.05% sodium azide, approx. pH 7.2.

### Molecular Weight:

~ 155 kDa

### Swiss-Prot:

P19174

### Purification&Purity:

The antibody was affinity-purified from rabbit antiserum by affinity-chromatography using epitope-specific immunogen and the purity is > 95% (by SDS-PAGE).

### Applications:

WB: 1:500~1:1000

IHC: 1:50~1:200

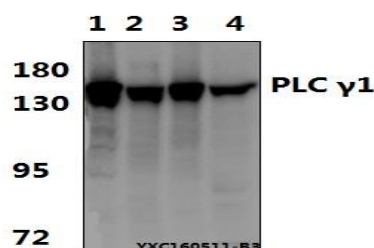
### Storage&Stability:

Store at 4 °C short term. Aliquot and store at -20 °C long term. Avoid freeze-thaw cycles.

### Specificity:

PLCG1 (G777) polyclonal antibody detects endogenous levels of PLCG1 protein.

### DATA:



Western blot (WB) analysis of PLC  $\gamma$ 1 (G777) polyclonal antibody at 1:500 dilution

Lane1:U-87MG whole cell lysate(40 $\mu$ g)

Lane2:C6 whole cell lysate(40 $\mu$ g)

Lane3:The Brain tissue lysate of Mouse(40 $\mu$ g)

Lane4:The Testis tissue lysate of Mouse(40 $\mu$ g)



Immunohistochemistry (IHC) analyzes of PLCG1 (G777) pAb in paraffin-embedded human breast carcinoma tissue.

### Note:

For research use only, not for use in diagnostic procedure.

### Bioworld Technology, Inc.

Add: 1660 South Highway 100, Suite 500 St. Louis Park, MN 55416, USA.

Email: [info@bioworld.com](mailto:info@bioworld.com)

Tel: 6123263284

Fax: 6122933841

### Bioworld technology, co. Ltd.

Add: No 9, weidi road Qixia District Nanjing, 210046, P. R. China.

Email: [info@biogot.com](mailto:info@biogot.com)

Tel: 0086-025-68037686

Fax: 0086-025-68035151