

p15 INK4b (G113) polyclonal antibody

Catalog: BS1267

Host: Rabbit

Reactivity: Human, Mouse, Rat

BackGround:

p15 (PAF), also known as PAF, L5, OEATC1 (overexpressed in anaplastic thyroid carcinoma 1) or NS5ATP9, is a 111 amino acid protein that localizes to both the nucleus and the mitochondria. Highly expressed in colon and thymus with lower expression in liver, ovary, kidney, spleen, placenta and small intestine, p15 (PAF) interacts with the nuclear antigen PCNA and, through this interaction, is thought to protect cells from UV-induced cell death. The association of p15 (PAF) and PCNA is enhanced by UV treatment and is facilitated by the binding of ING1, a tumor suppressor that can induce apoptosis.

Product:

1 mg/ml in Phosphate buffered saline (PBS) with 0.05% sodium azide, approx. pH 7.2.

Molecular Weight:

~ 15 kDa

Swiss-Prot:

P42772

Purification&Purity:

The antibody was affinity-purified from rabbit antiserum by affinity-chromatography using epitope-specific immunogen and the purity is > 95% (by SDS-PAGE).

Applications:

WB: 1:500~1:1000

IHC: 1:50~1:200

IF: 1:50~1:200

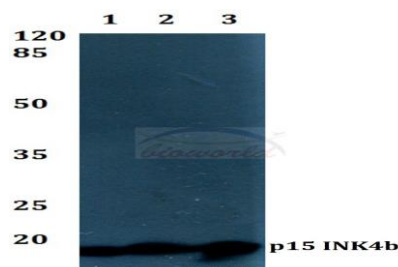
Storage&Stability:

Store at 4 °C short term. Aliquot and store at -20 °C long term. Avoid freeze-thaw cycles.

Specificity:

p15 INK4b (G113) polyclonal antibody detects endogenous levels of p15 INK4b protein.

DATA:

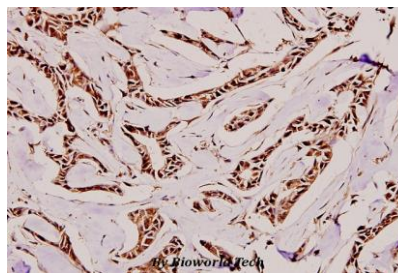


Western blot (WB) analysis of p15 INK4b (G113) polyclonal antibody at 1:500 dilution

Lane1: HEK293T whole cell lysate

Lane2: Raw264.7 whole cell lysate

Lane3: H9C2 whole cell lysate



Immunohistochemistry (IHC) analyzes of p15 INK4b (G113) pAb in paraffin-embedded human breast carcinoma tissue at 1:100.

Note:

For research use only, not for use in diagnostic procedure.

Bioworld Technology, Inc.

Add: 1660 South Highway 100, Suite 500 St. Louis Park, MN 55416, USA.

Email: info@bioworld.com

Tel: 6123263284

Fax: 6122933841

Bioworld technology, co. Ltd.

Add: No 9, weidi road Qixia District Nanjing, 210046, P. R. China.

Email: info@biogot.com

Tel: 0086-025-68037686

Fax: 0086-025-68035151