

OPN (L285) polyclonal antibody

Catalog: BS1264

Host: Rabbit

Reactivity: Human, Mouse, Rat

BackGround:

Osteopontin (OPN), also designated bone sialoprotein 1, urinary stone protein, spp-1, Eta-1, nephropontin and uropontin, is an extracellular matrix cell adhesion phosphoglycoprotein. OPN is deposited into unmineralized matrix prior to calcification leading to localization at various tissue interfaces including cement lines, lamina limitans and between collagen fibrils of fully matured hard tissues. While OPN is a major product of osteoblasts, it is also synthesized by brain and kidney cells. OPN isolated from or secreted by various tissues ranges in molecular weight due to posttranslational modifications. OPN functions as a substrate for transglutaminase and is involved in cell adhesion, chemoattraction and immunomodulation.

Product:

1 mg/ml in Phosphate buffered saline (PBS) with 0.05% sodium azide, approx. pH 7.2.

Molecular Weight:

~ 35, 60 kDa

Swiss-Prot:

P10451

Purification&Purity:

The antibody was affinity-purified from rabbit antiserum by affinity-chromatography using epitope-specific immunogen and the purity is > 95% (by SDS-PAGE).

Applications:

WB: 1:500~1:1000

IHC: 1:50~1:200

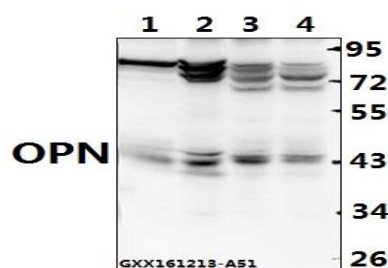
Storage&Stability:

Store at 4 °C short term. Aliquot and store at -20 °C long term. Avoid freeze-thaw cycles.

Specificity:

OPN (L285) polyclonal antibody detects endogenous levels of OPN protein.

DATA:



Western blot (WB) analysis of OPN (L285) polyclonal antibody at 1:500 dilution

Lane1:C6 whole cell lysate(40ug)

Lane2:AML-12 whole cell lysate(40ug)

Lane3:L02 whole cell lysate(40ug)

Lane4:A549 whole cell lysate(40ug)

Note:

For research use only, not for use in diagnostic procedure.

Bioworld Technology, Inc.

Add: 1660 South Highway 100, Suite 500 St. Louis Park, MN 55416, USA.

Email: info@bioworld.com

Tel: 6123263284

Fax: 6122933841

Bioworld technology, co. Ltd.

Add: No 9, weidi road Qixia District Nanjing, 210046, P. R. China.

Email: info@biogot.com

Tel: 0086-025-68037686

Fax: 0086-025-68035151